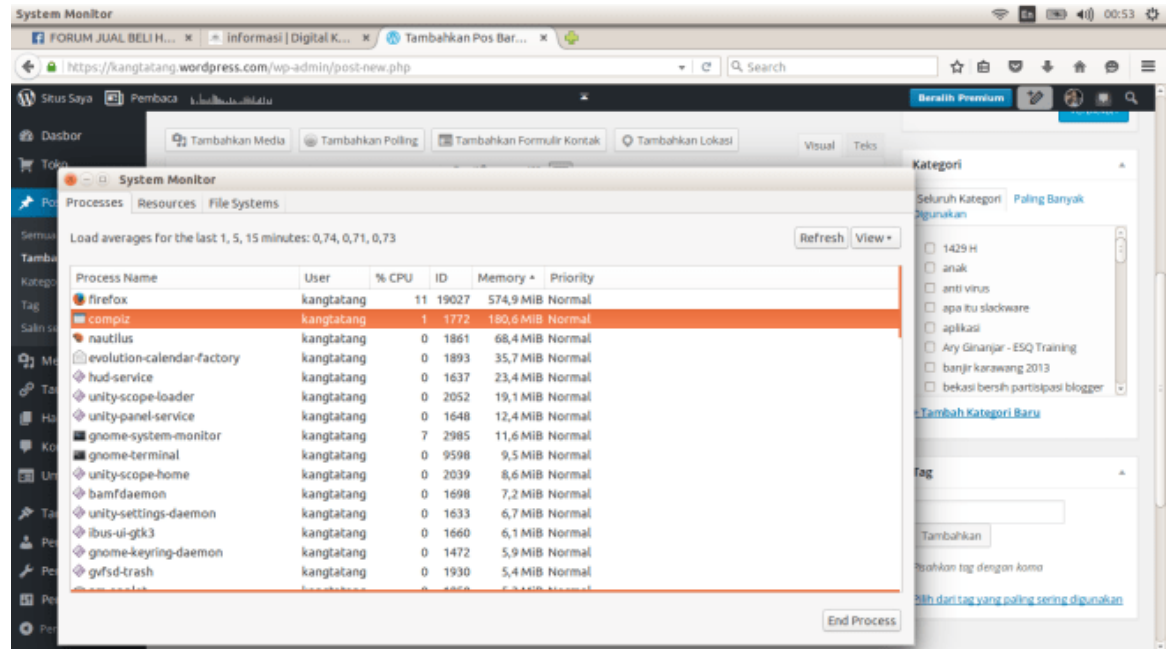


Ubuntu server OS

# Ubuntu Server OS – Uvod

- Open source Linux distribucija
- Najčešće korišćen server OS
- Razvija ga Canonical
- Stabilnost i sigurnost
- Besplatan i fleksibilan



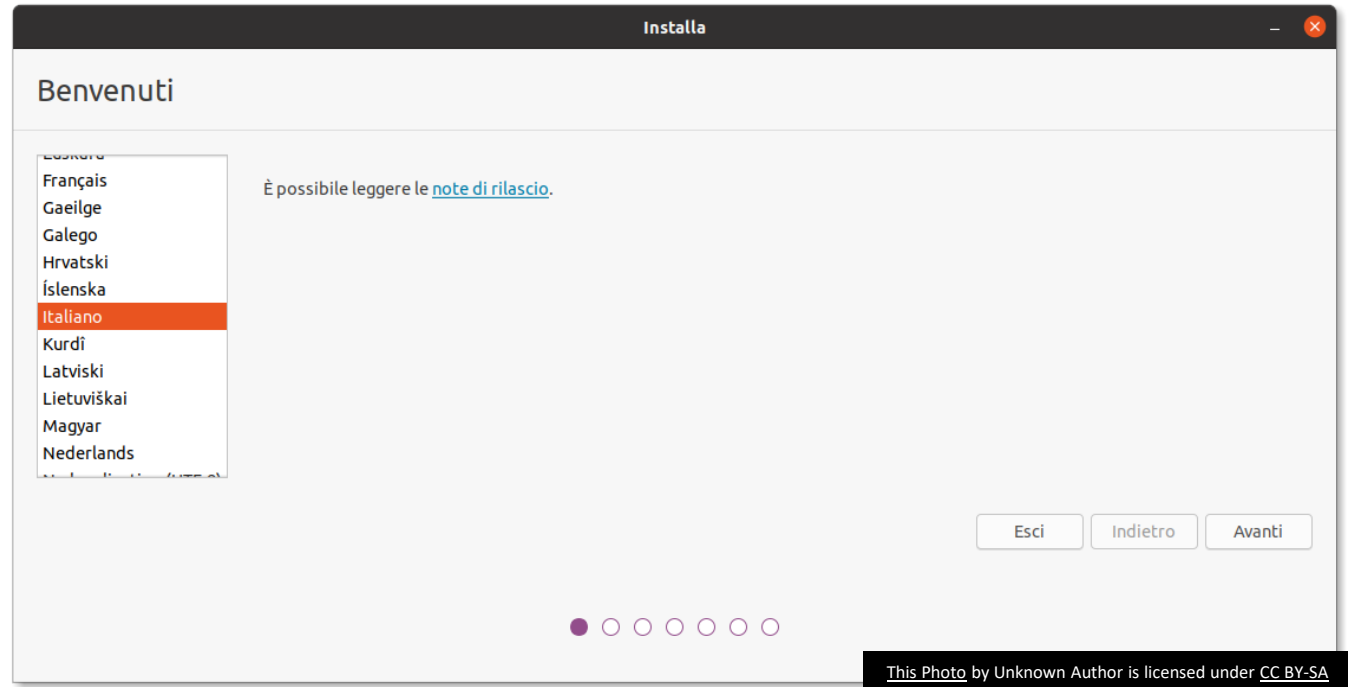
# Šta je Ubuntu Server

- Operativni sistem za servere
- Bez grafičkog interfejsa po default-u
- CLI (command line) upravljanje
- Visoka stabilnost
- Široka primena u cloud-u



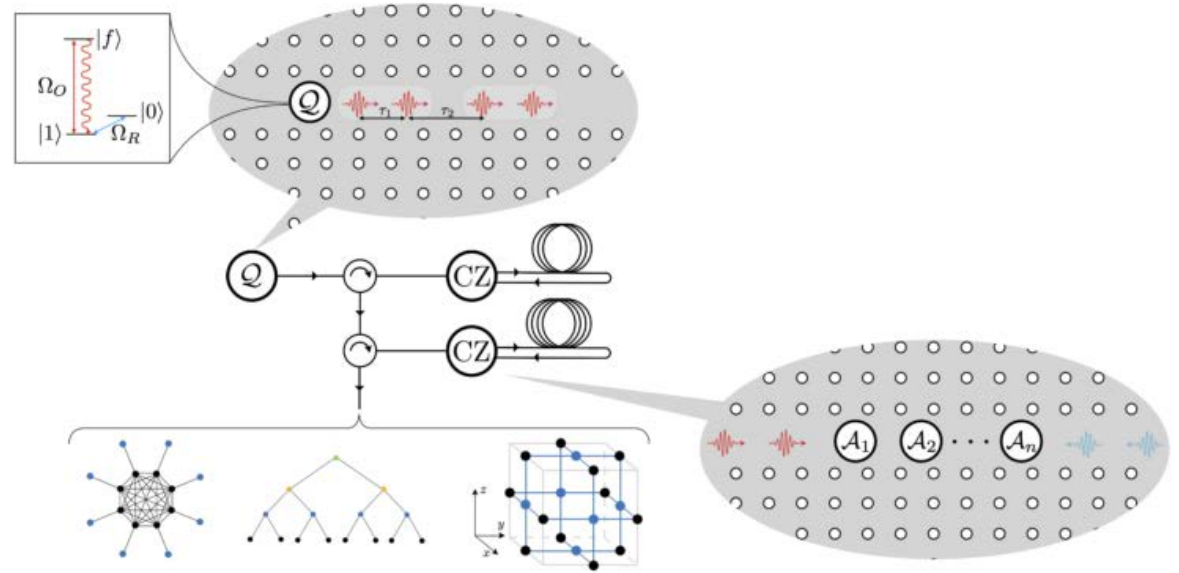
# Istoriya Ubuntu-a

- Pokrenut 2004. godine
- Zasnovan na Debian Linux-u
- Redovna LTS izdanja
- Velika open source zajednica
- Globalna popularnost



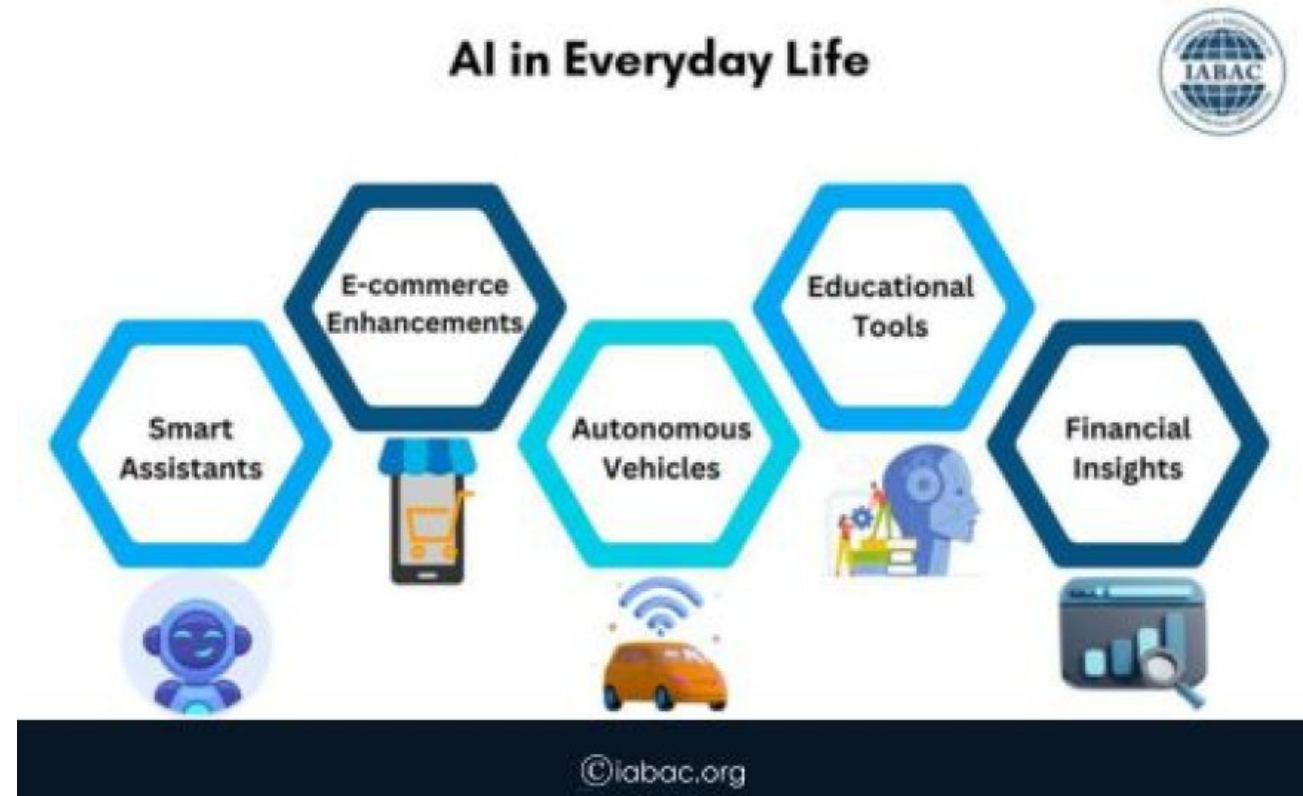
# Arhitektura sistema

- Linux kernel osnova
- Modularni sistem paketa
- APT paket menadžer
- Systemd servisni sistem
- Multi-user podrška



# Server primene

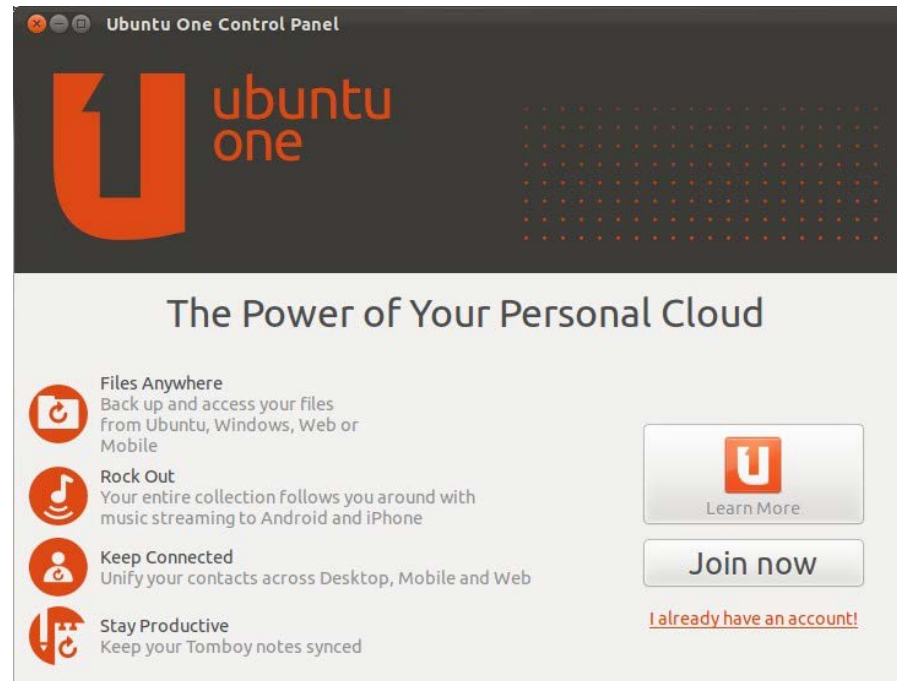
- Web hosting serveri
- Baze podataka
- Cloud infrastruktura
- AI i ML serveri
- IoT backend sistemi



[This Photo](#) by Unknown Author is licensed under [CC BY-SA](#)

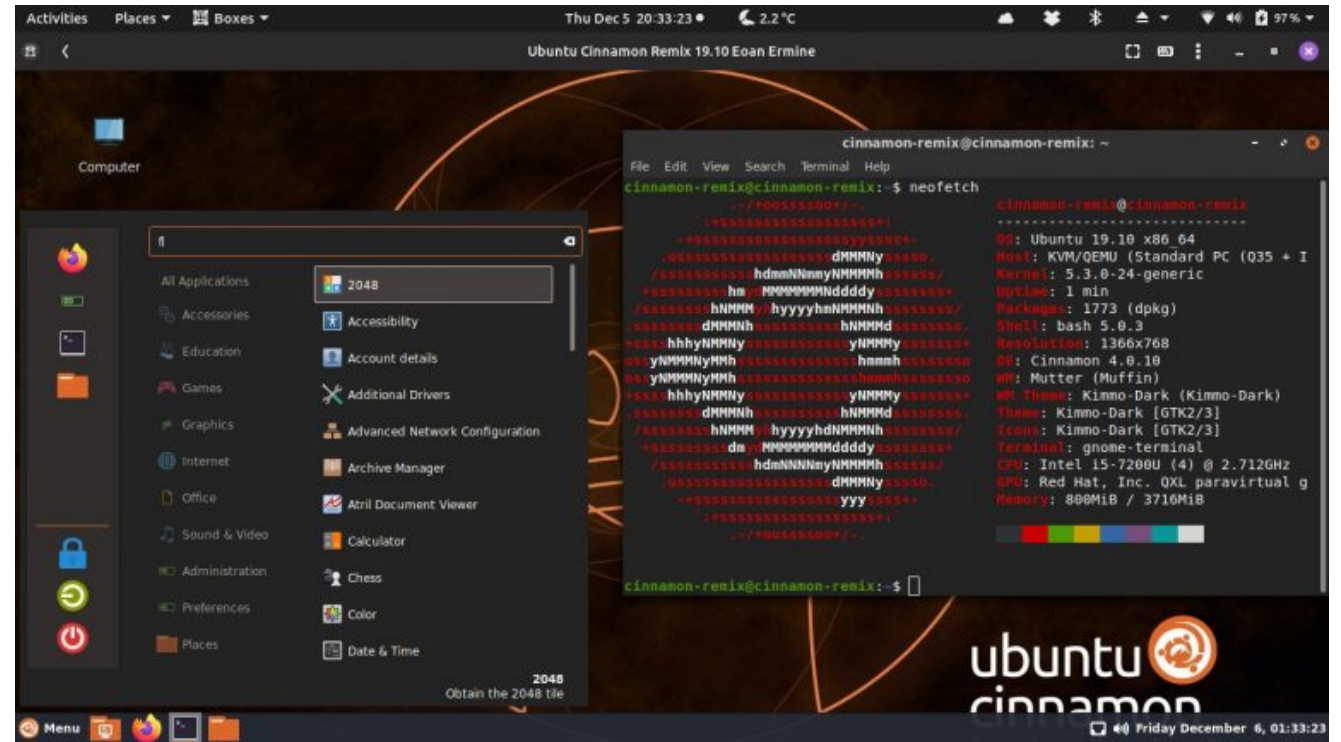
# Bezbednost

- Firewall (UFW)
- SSH pristup
- Redovna ažuriranja
- Permission sistem
- SELinux/AppArmor



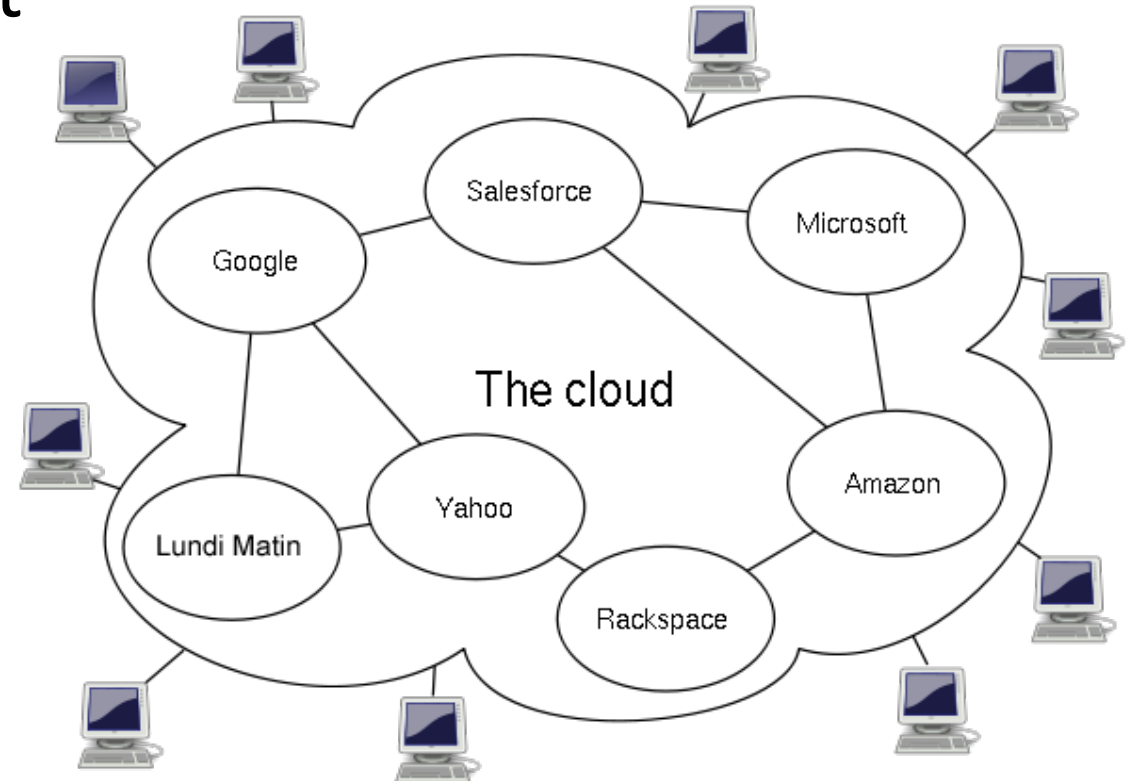
# Performanse

- Niska potrošnja resursa
- Optimizovan kernel
- Skalabilnost
- Podrška za multi-core
- Visoka dostupnost



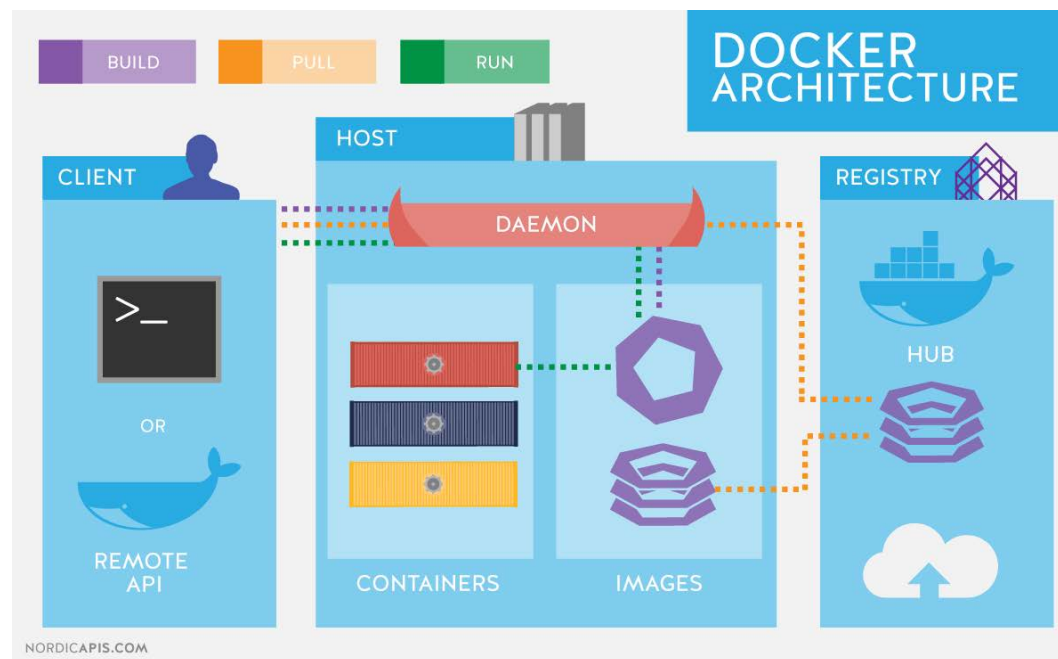
# Cloud integracija

- Amazon AWS podrška
- Microsoft Azure kompatibilnost
- Google Cloud podrška
- OpenStack integracija
- Kubernetes podrška



# Docker i kontejneri

- Podrška za Docker
- Lightweight aplikacije
- Brza distribucija
- Microservices arhitektura
- Skaliranje sistema

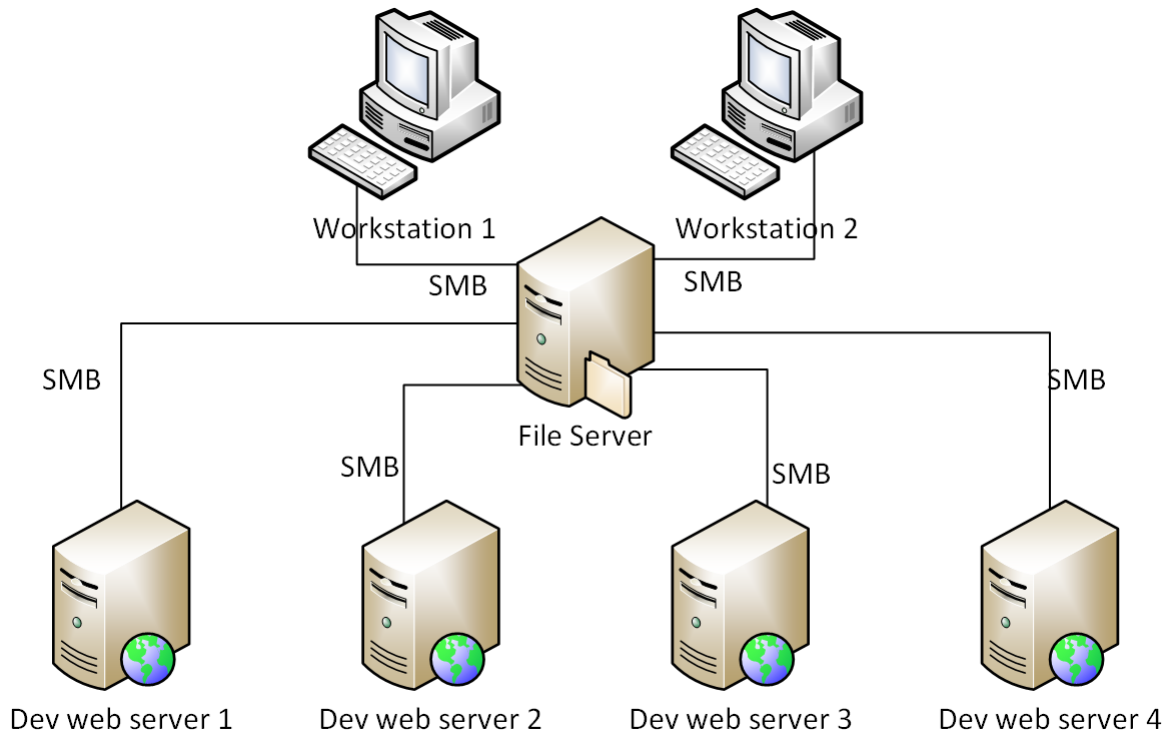


# Baze podataka

- MySQL podrška
- PostgreSQL stabilnost
- MongoDB kompatibilnost
- Redis keš sistem
- Visoka pouzdanost

# Web serveri

- Apache HTTP Server
- Nginx server
- Load balancing
- Reverse proxy
- SSL podrška

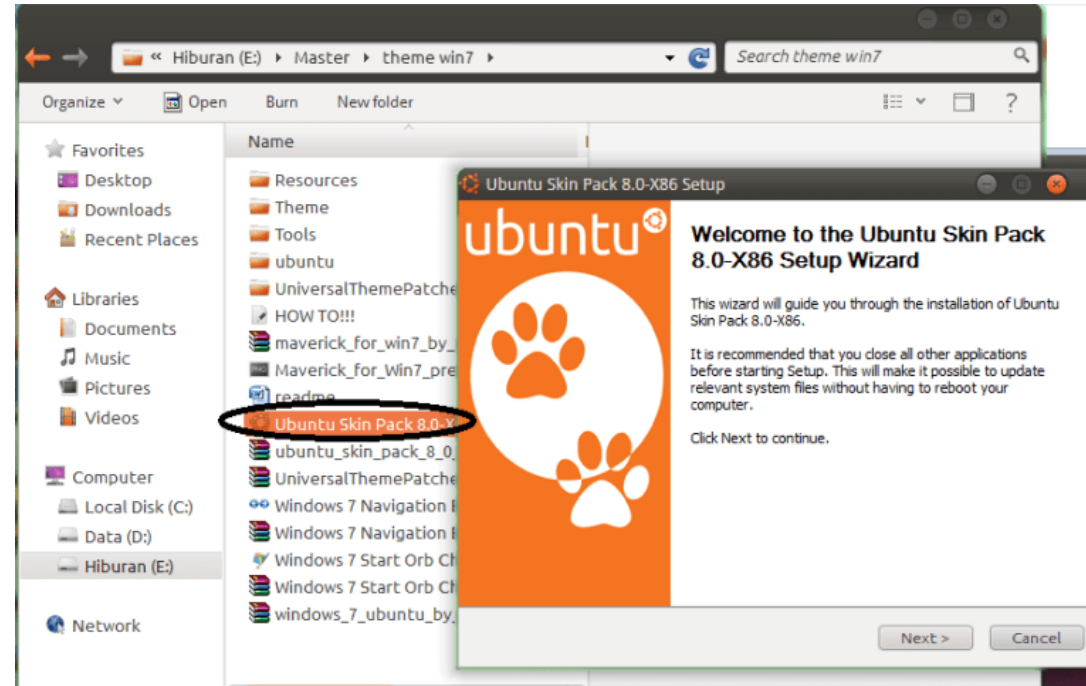


# AI i Data Science

- Python okruženje
- TensorFlow podrška
- PyTorch kompatibilnost
- Jupyter server
- GPU optimizacija

# IoT sistemi

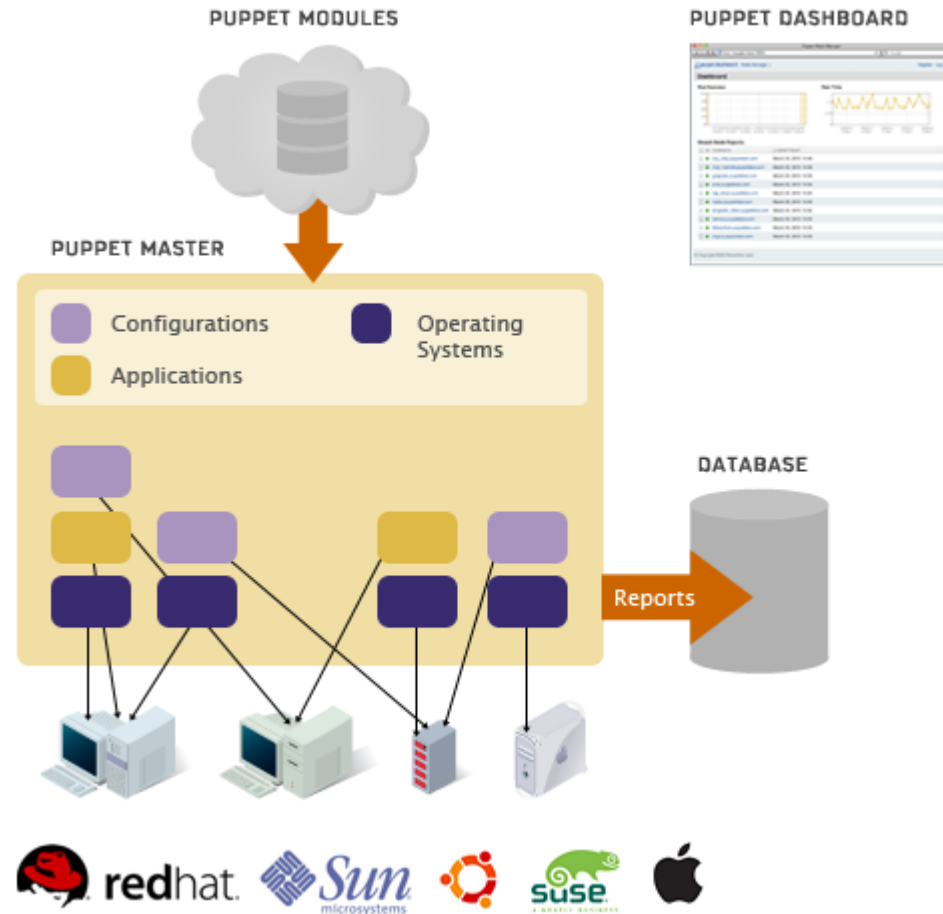
- Edge computing
- Real-time obrada
- Sensor integracija
- MQTT protokol
- Scalable backend



[This Photo](#) by Unknown Author is licensed under [CC BY-NC](#)

# Administracija sistema

- SSH pristup
- Terminal komande
- Log monitoring
- Cron jobs
- User management



# Paket menadžment



APT sistem



Deb paketi



Snap paketi



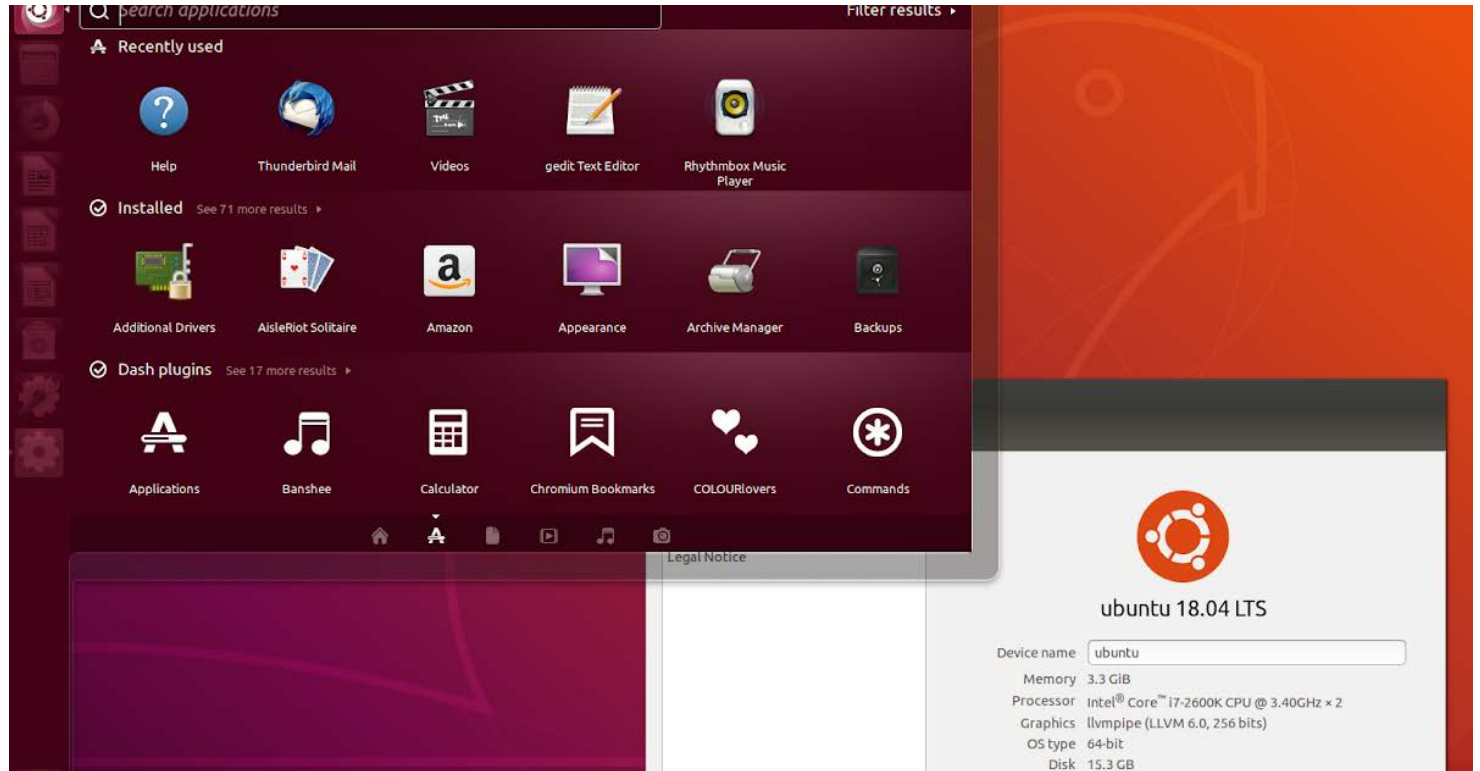
Ažuriranja  
sistema



Dependency  
management

# Prednosti Ubuntu servera

- Besplatan
- Stabilan
- Siguran
- Skalabilan
- Open source



# Nedostaci

- CLI učenje kriva
- Nema GUI default
- Potrebno znanje Linux-a
- Manual konfiguracija
- Administracija zahtevna

## Zaključak

Idealan server OS

Široka industrijska primena

Cloud standard

Podrška zajednice

Ključni open source sistem