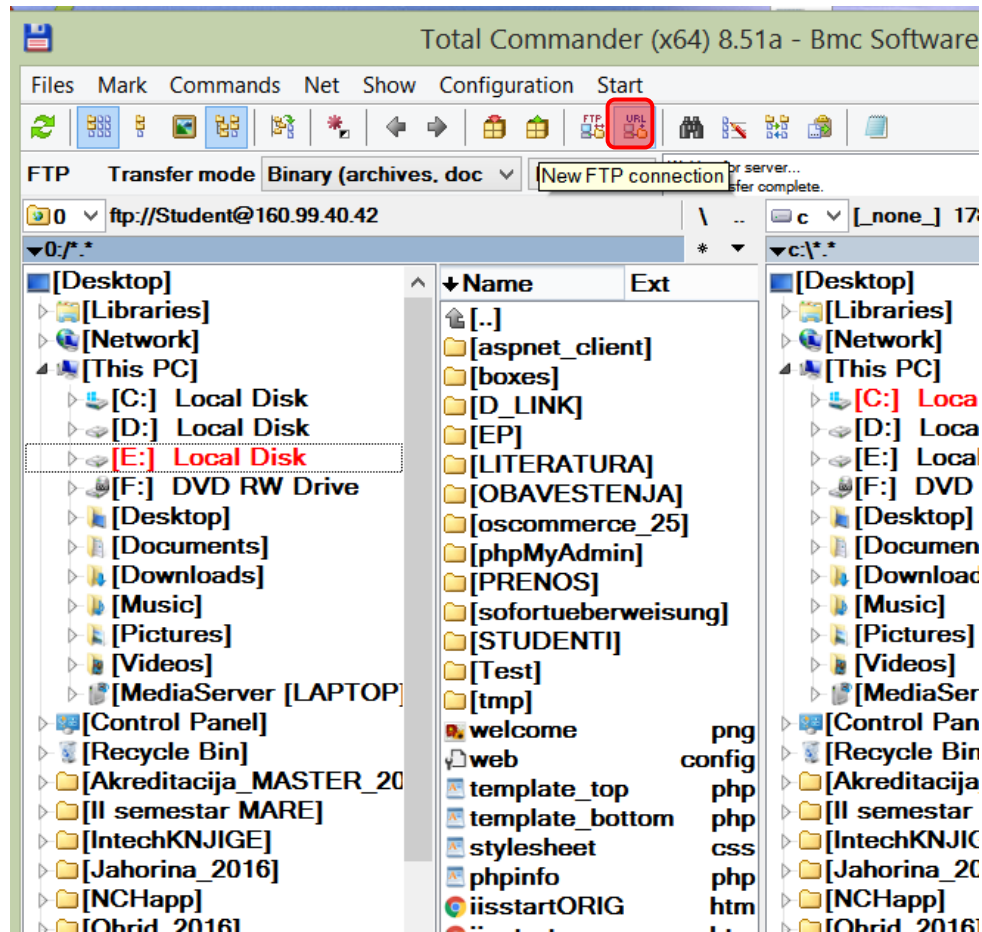


Nwt\_2018 Šifra za predavanja od 1 do 4 iz 2017/18.

srt\_2018 za predavanja od 5 do 14.

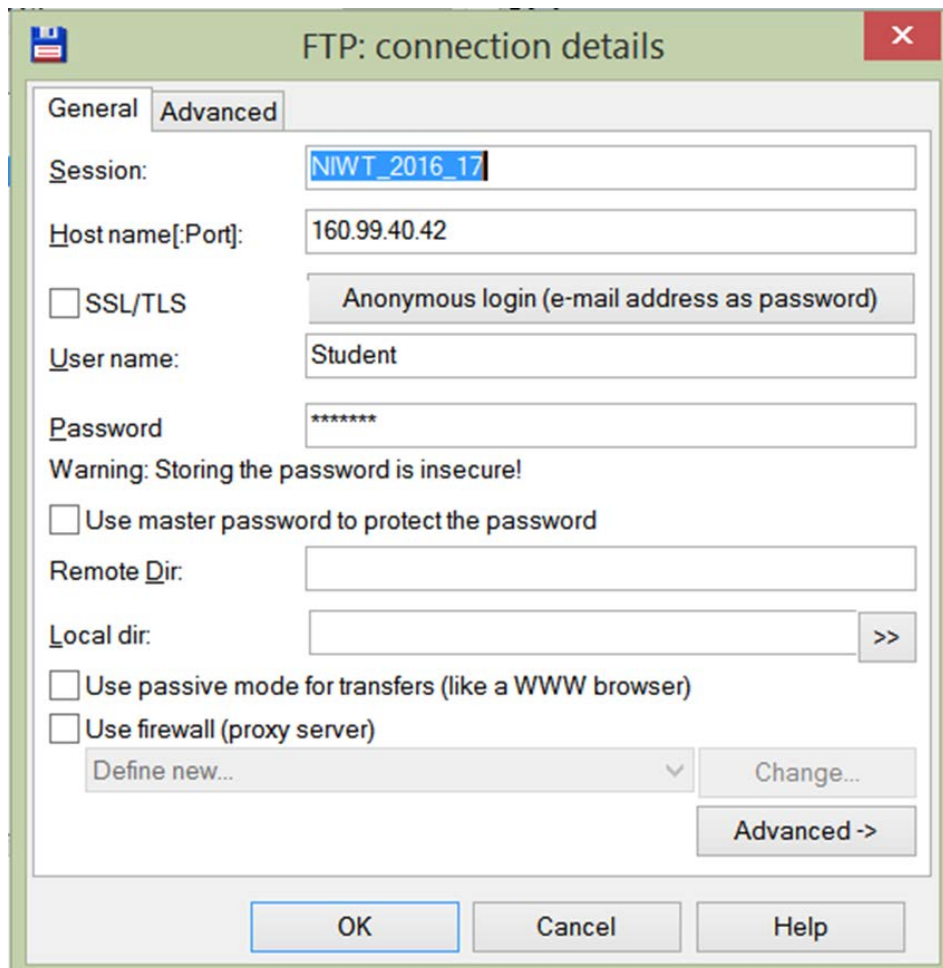
### Kreiranje nove FTP konekcije

1. Startujte Total Commander (ver. 8.51a)
2. Izaberite iz menija Net| FTP New connection ili označena ikonica iz toolbara-a.
3. Porebno je da unesete pristupne parametre (credentials).



Kartica: General,

1. Unesite Ime sesije – proizvoljno.
2. Host name – 160.99.40.42 - obavezno
3. User name: Student – obavezno, dobijena šifra od administratora
4. Password: šifra - obavezno dobijena od administratora (Niw\*16, Nwt\*2018)



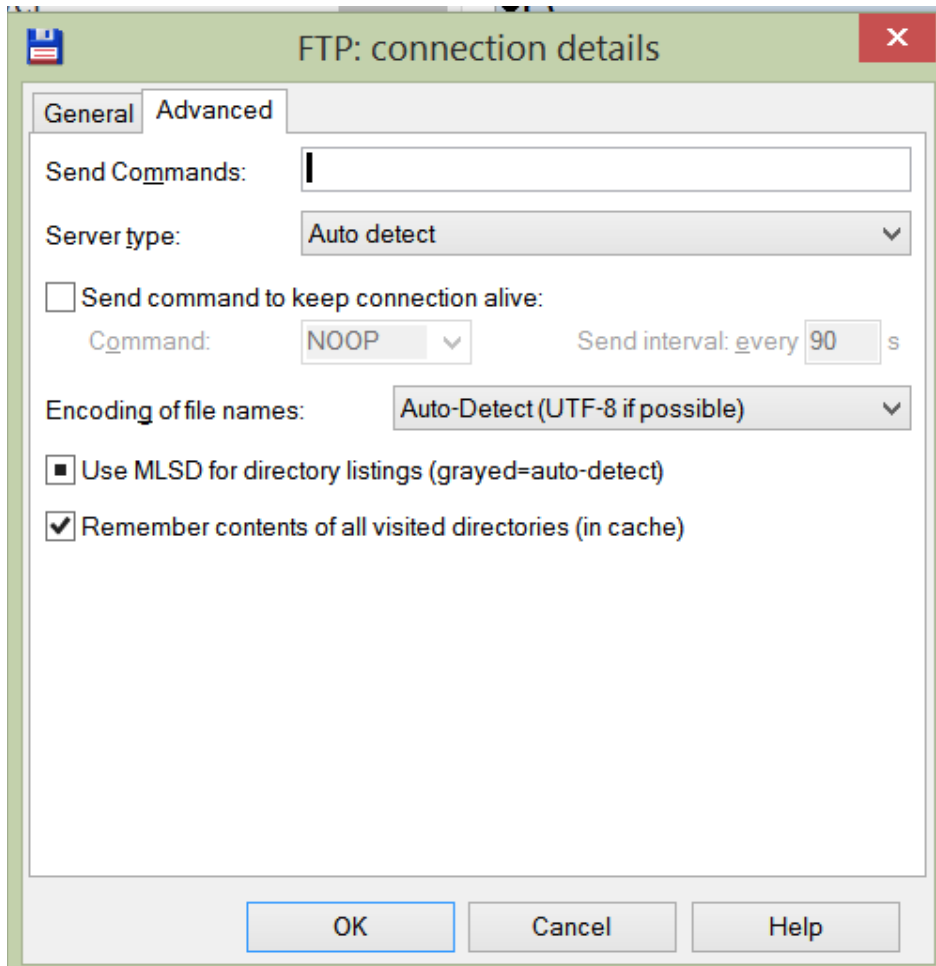
The image shows a screenshot of a Windows dialog box titled "FTP: connection details". The dialog has two tabs: "General" (selected) and "Advanced". The "General" tab contains the following fields and options:

- Session:** A text box containing "NIWT\_2016\_17".
- Host name[:Port]:** A text box containing "160.99.40.42".
- SSL/TLS:** An unchecked checkbox. To its right is a button labeled "Anonymous login (e-mail address as password)".
- User name:** A text box containing "Student".
- Password:** A text box containing seven asterisks "\*\*\*\*\*".
- Warning:** The text "Warning: Storing the password is insecure!" is displayed.
- Use master password to protect the password:** An unchecked checkbox.
- Remote Dir:** An empty text box.
- Local dir:** An empty text box with a ">>" button to its right.
- Use passive mode for transfers (like a WWW browser):** An unchecked checkbox.
- Use firewall (proxy server):** An unchecked checkbox.
- Define new...:** A dropdown menu with a downward arrow.
- Change...:** A button to the right of the dropdown menu.
- Advanced ->:** A button at the bottom right of the dialog.

At the bottom of the dialog, there are three buttons: "OK", "Cancel", and "Help".

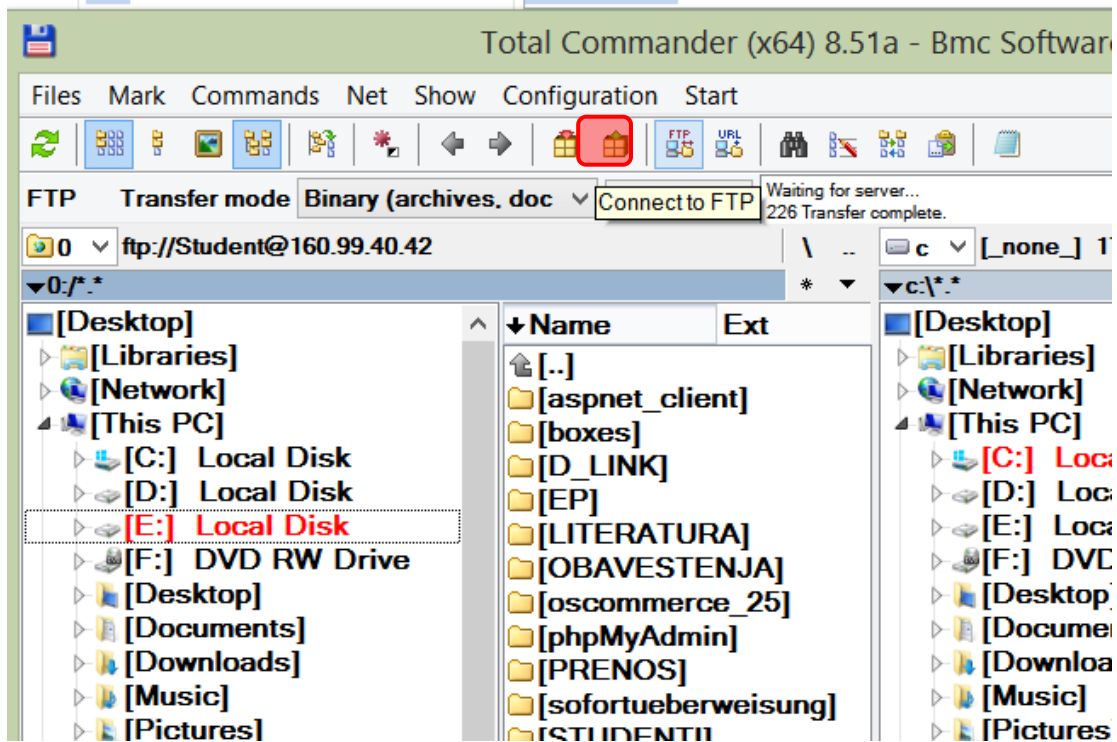
Kartica: Advanced

Prihvatile ponuđeno

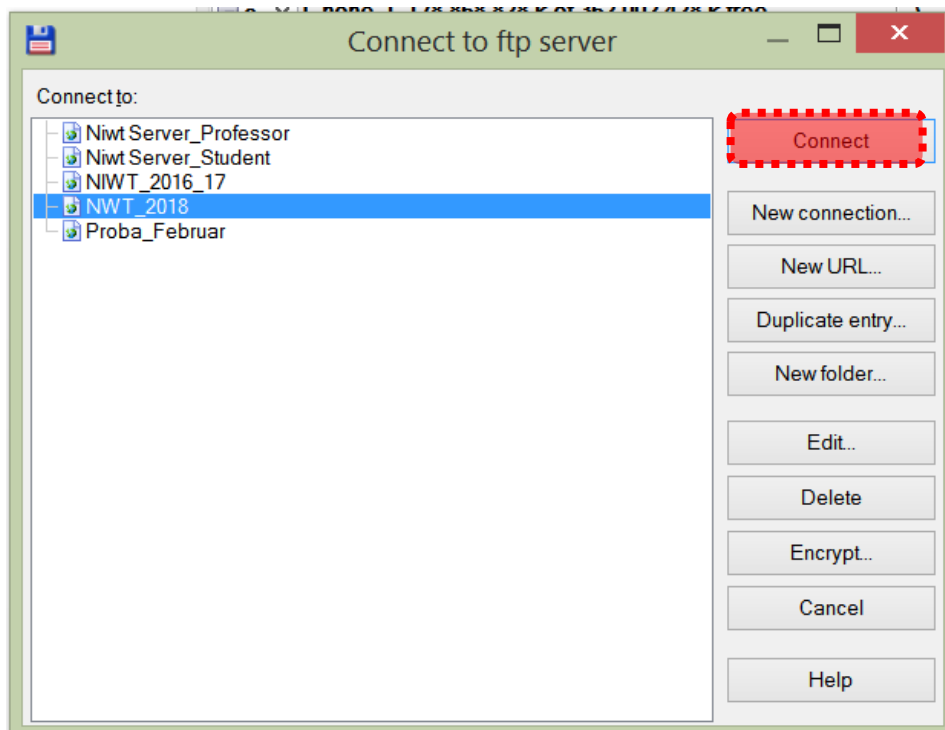
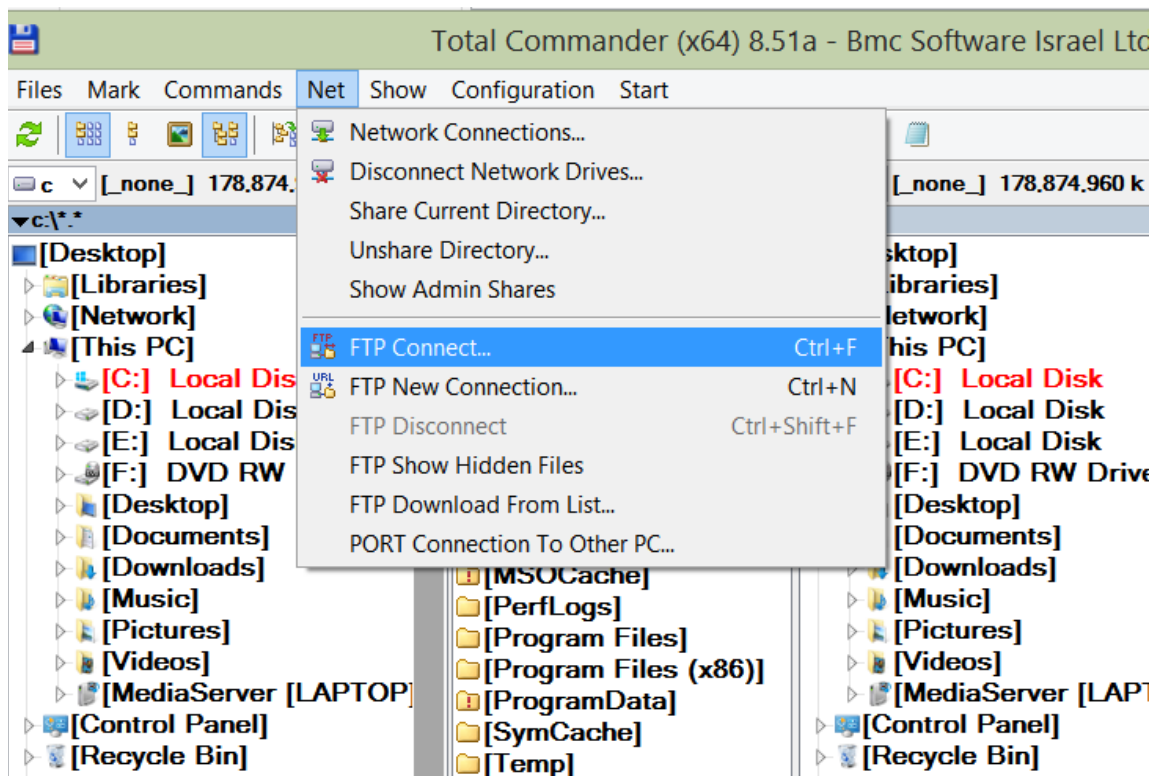


## Korišćene kreirane FTP konekcije

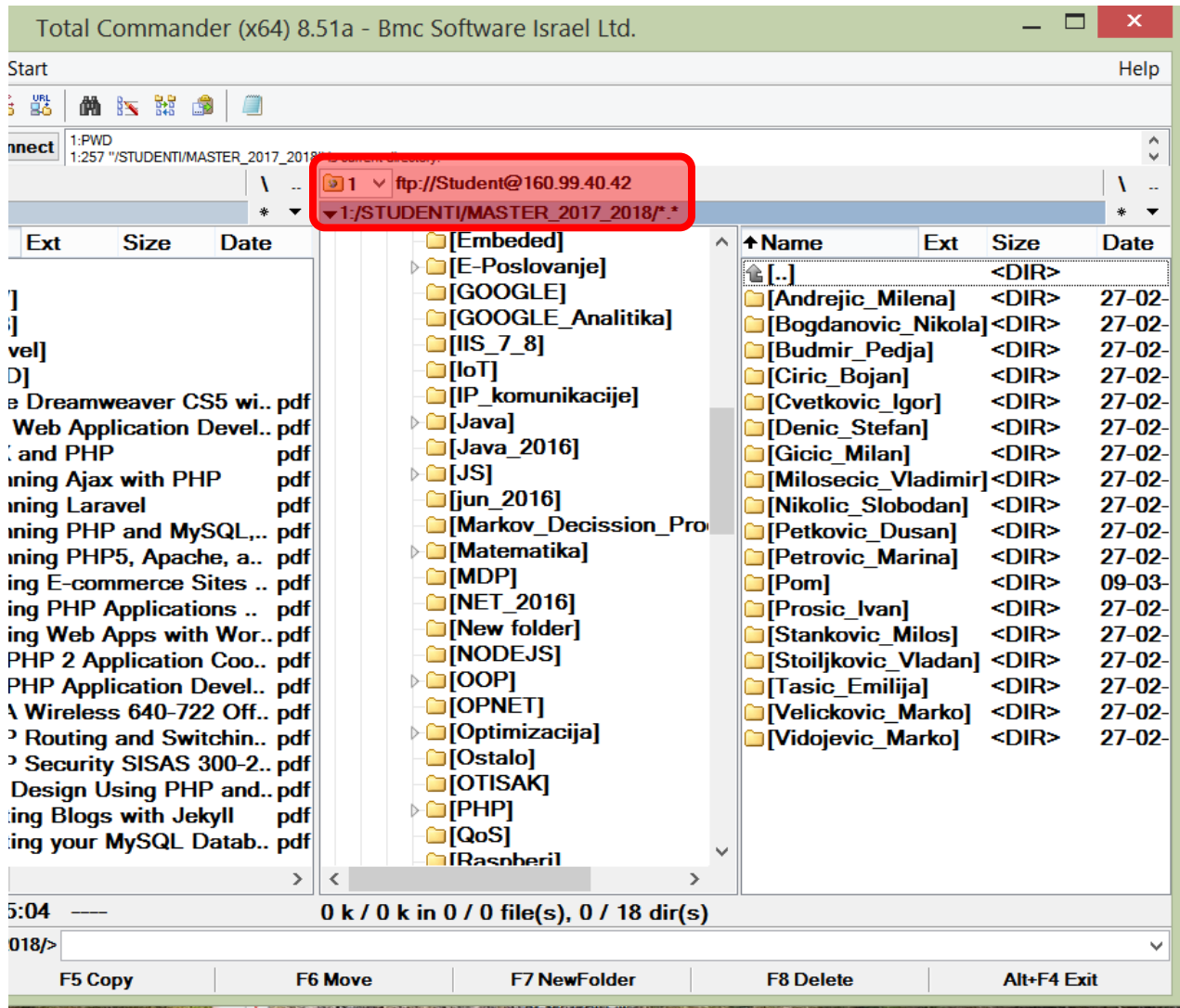
1. Izaberi Net|FTP connect...







Izlistaće se svi folderi i fajlovi.



ILI IZ COMMAND PROMT-a: ftp 160.99.40.42

[https://160.99.40.42/STUDENTI/MASTER\\_2017\\_2018/Pom/multimedije.html](https://160.99.40.42/STUDENTI/MASTER_2017_2018/Pom/multimedije.html)

Probajte pristup i IE i Chrom-om. Da li postoje razlike?

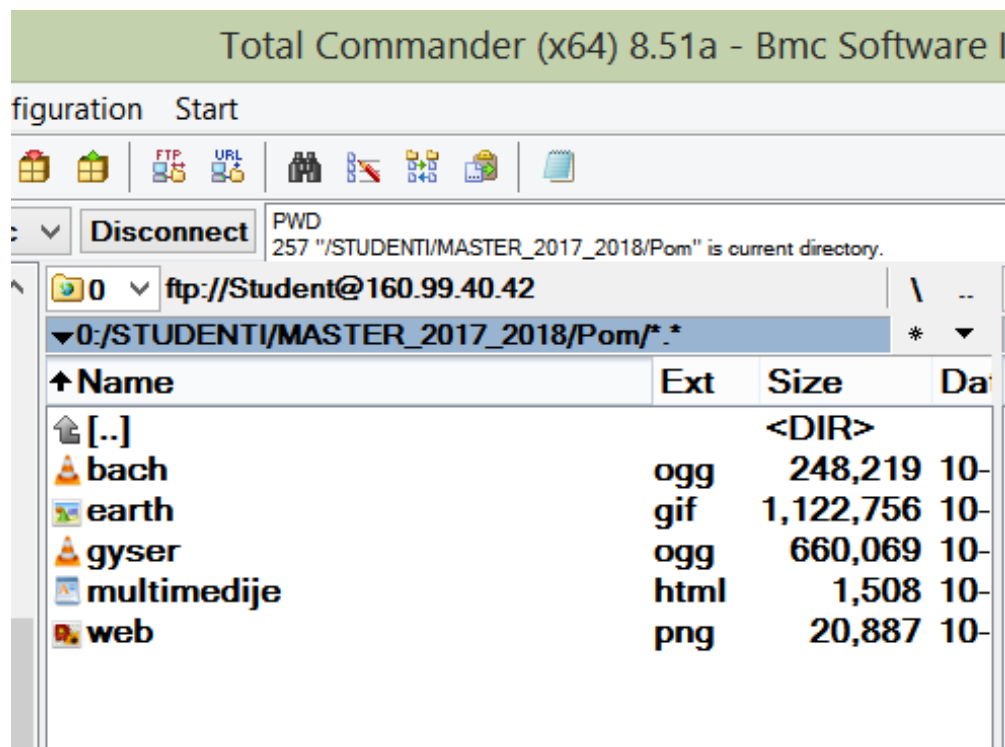
Šta učiniti da svi Web čitači korektno prikazuju sadržaj? Pogledajte predavanje o multimedijama na Web-u.

Da bi se poslali klijentu svi MIME tipovi na serveru moraju biti dozvoljeni. To postavlja Web administrator.

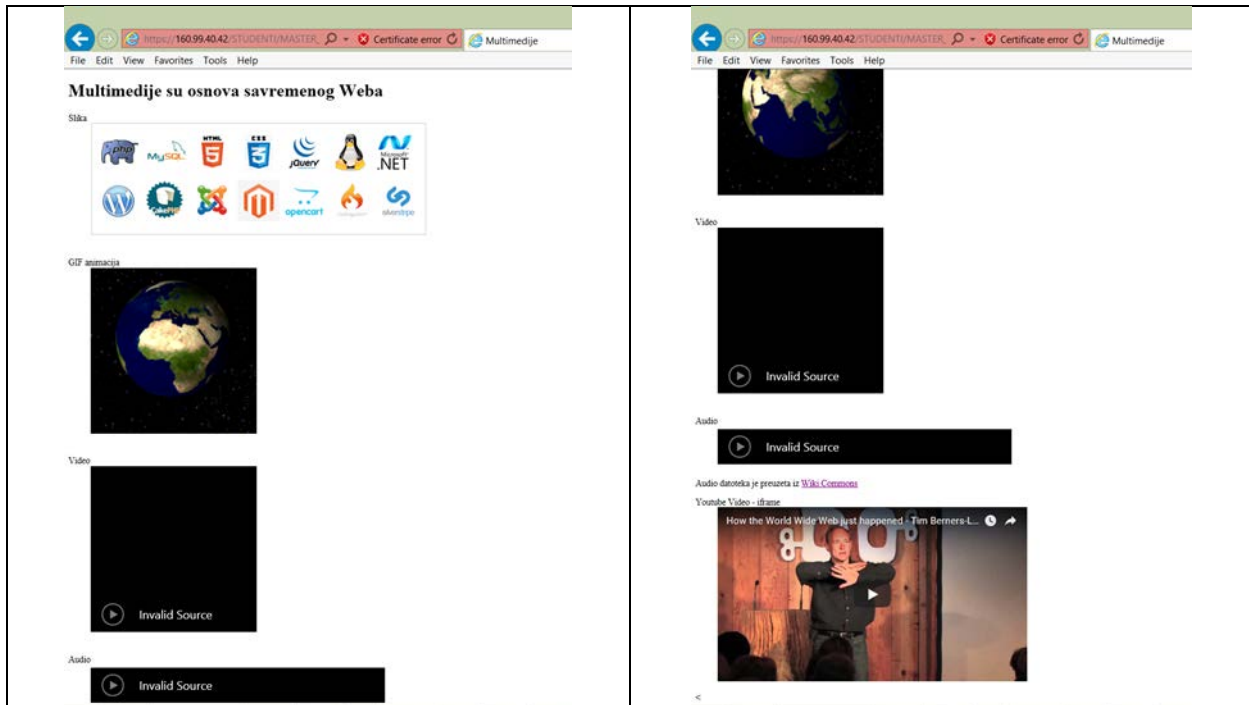
## HTML Video - Media Types

File Format	Media Type
MP4	video/mp4
WebM	video/webm
Ogg	video/ogg

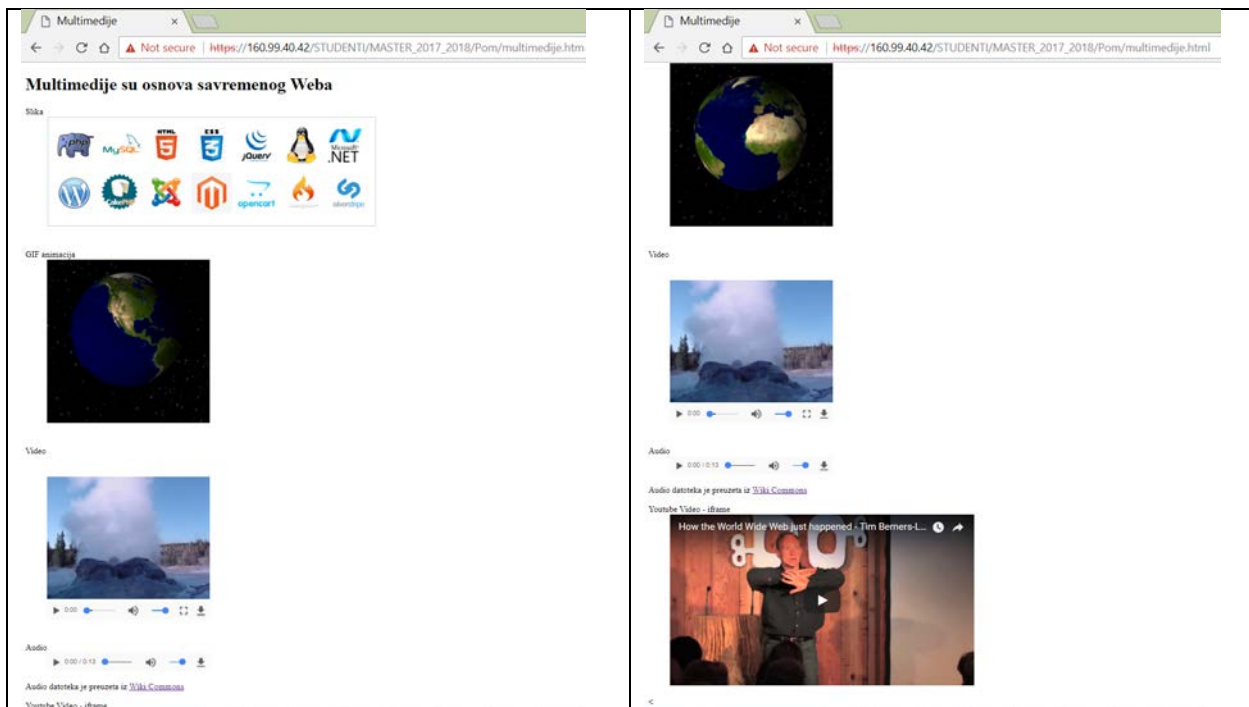
Pogledajte sadržaj foldera kome pristupate.



Izgled u IE



Izgled u Chrome-u.



Odakle potiču razlike u prikazivanju? Pogledajte sledeću tabelu.

## HTML Video - Browser Support

In HTML5, there are 3 supported video formats: MP4, WebM, and Ogg.

The browser support for the different formats is:

Browser	MP4	WebM	Ogg
Internet Explorer	YES	NO	NO
Chrome	YES	YES	YES
Firefox	YES	YES	YES
Safari	YES	NO	NO
Opera	YES (from Opera 25)	YES	YES

## HTML Video - Media Types

File Format	Media Type
MP4	video/mp4
WebM	video/webm
Ogg	video/ogg





Kako rešiti gore pomenuti problem? Pogledajte predavanja.

---


Pristup bazama podataka na Webu

Na Istoj IP adresi na kojoj se nalazi IIS možete pronaći i DBMS (engl. DataBase Management System) MySQL.

<https://160.99.40.42/PhpMyadmin>

← →  https://160.99.40.42/PhpMyadmin    Certificate Error: Navigatio... x

File Edit View Favorites Tools Help




 There is a problem with this website's security certificate.






---

The security certificate presented by this website was issued for a different website's address.  
The security certificate presented by this website was not issued by a trusted certificate authority.

Security certificate problems may indicate an attempt to fool you or intercept any data you send to the server.

**We recommend that you close this webpage and do not continue to this website.**

-  [Click here to close this webpage.](#)
-  [Continue to this website \(not recommended\).](#)
-  [More information](#)

← →  https://160.99.40.42/PhpMyadmin/   Certificate error   phpMyAdmin x

File Edit View Favorites Tools Help

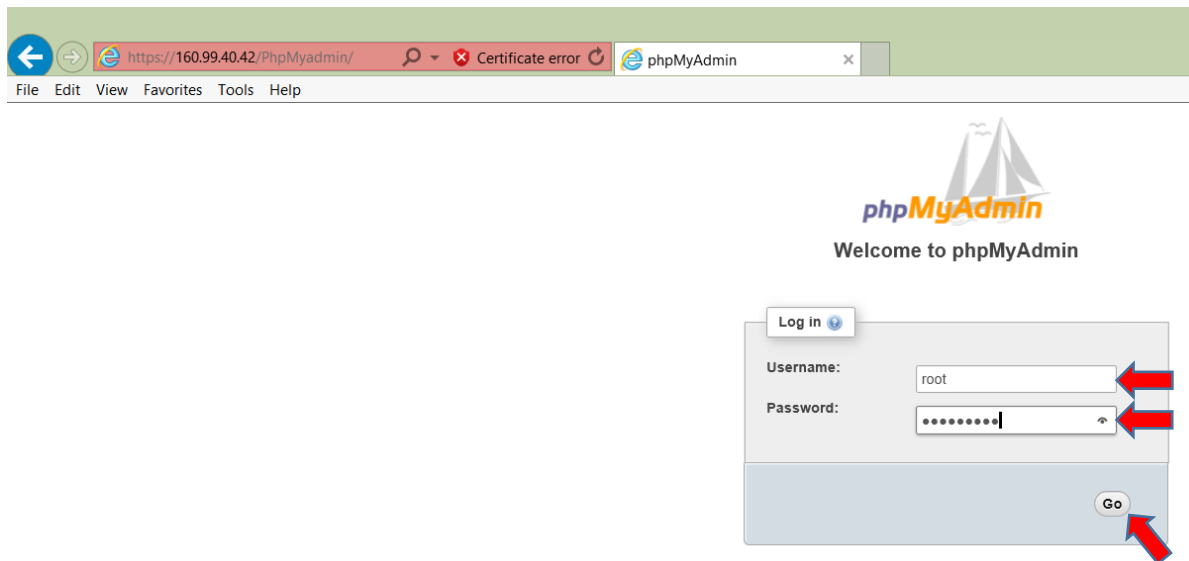


Welcome to phpMyAdmin

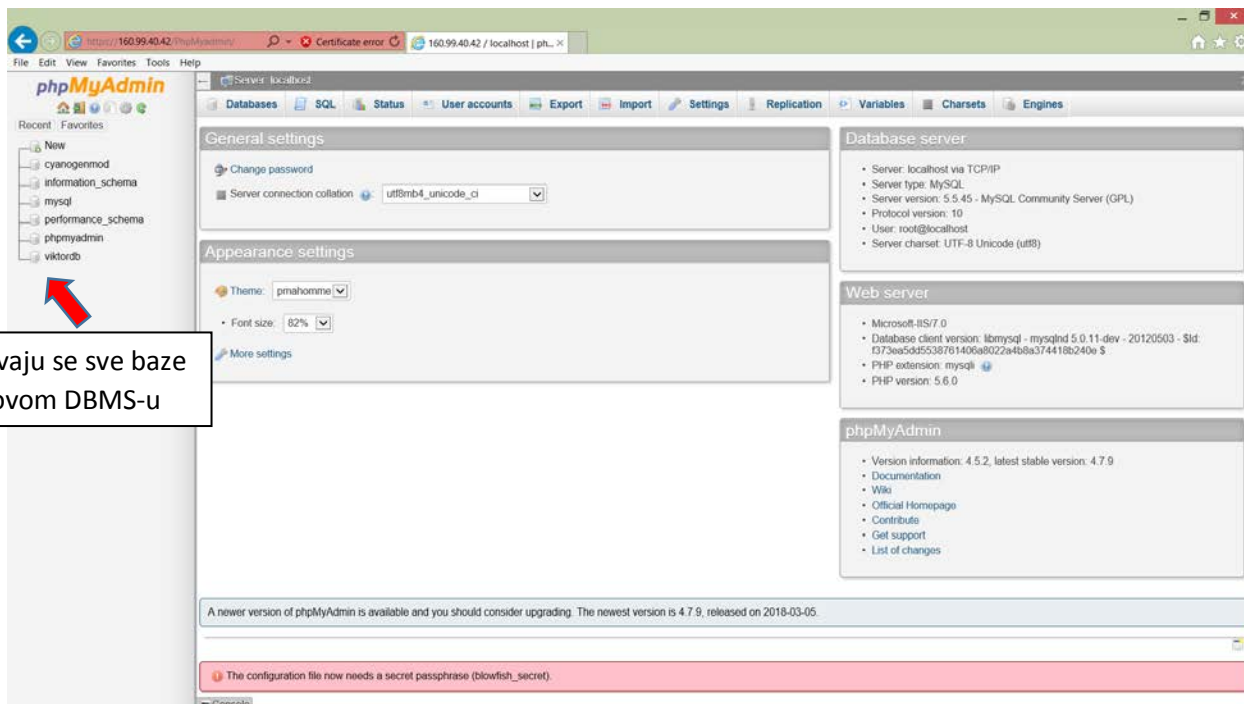
[Log in](#)

Username:

Password:



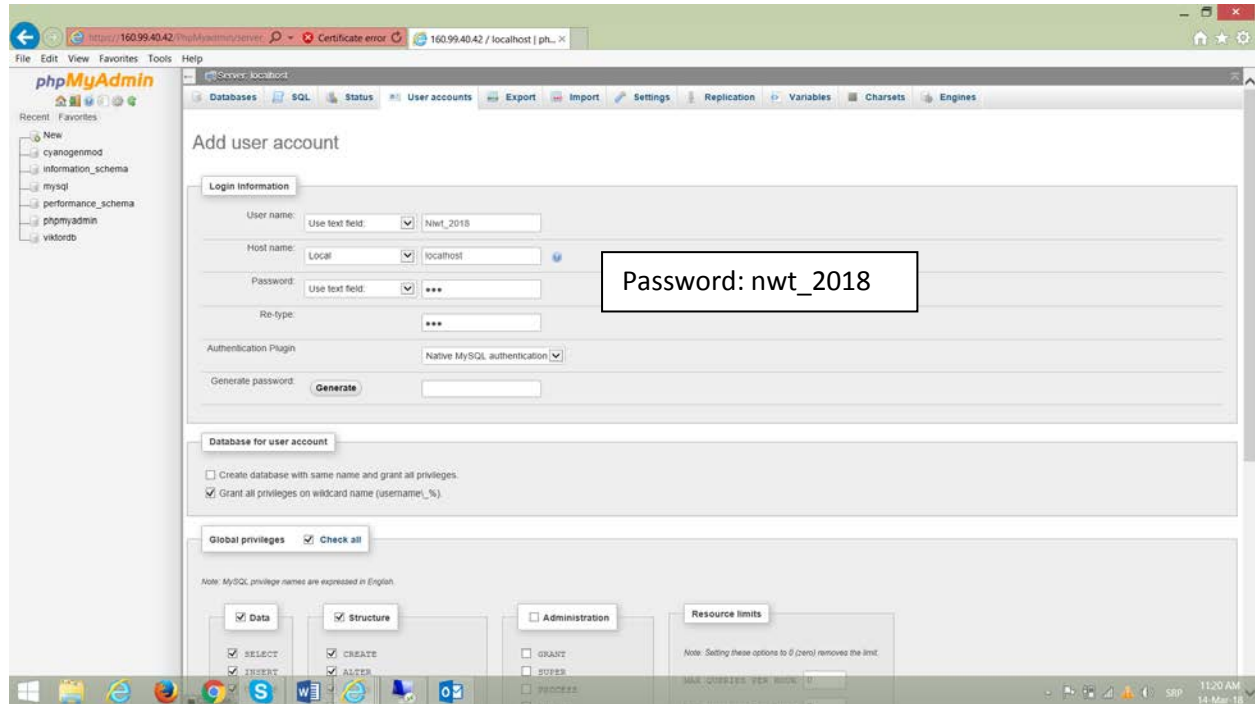
1. U polje *Username* upišite šifre koje ste dobili od administratora.
2. U polje *Password* upišite šifru koje ste dobili od administratora.
3. GO



**FORMIRANJE BAZE** podataka pod nazivom *hwdtt* i tabele *webSiteUsers*.

Pre kreiranja baze podataka neophodno je kreirati korisnički nalog u kome se definiše lozinka za pristup bazi podataka koja će se u nastavku kreirati.

Dodavanje korisničkog naloga – nije potrebno obaviti na NWT serveru – administrator je to već uradio.

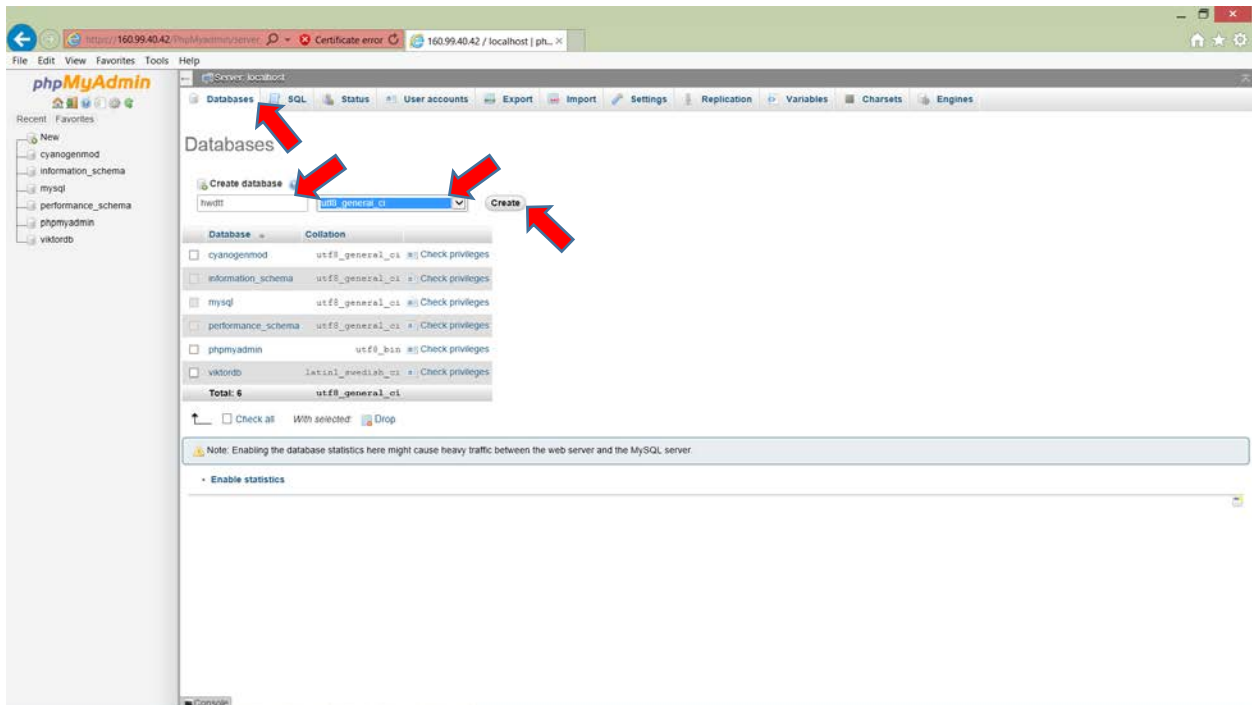


Za sve ove poslove se može se koristiti

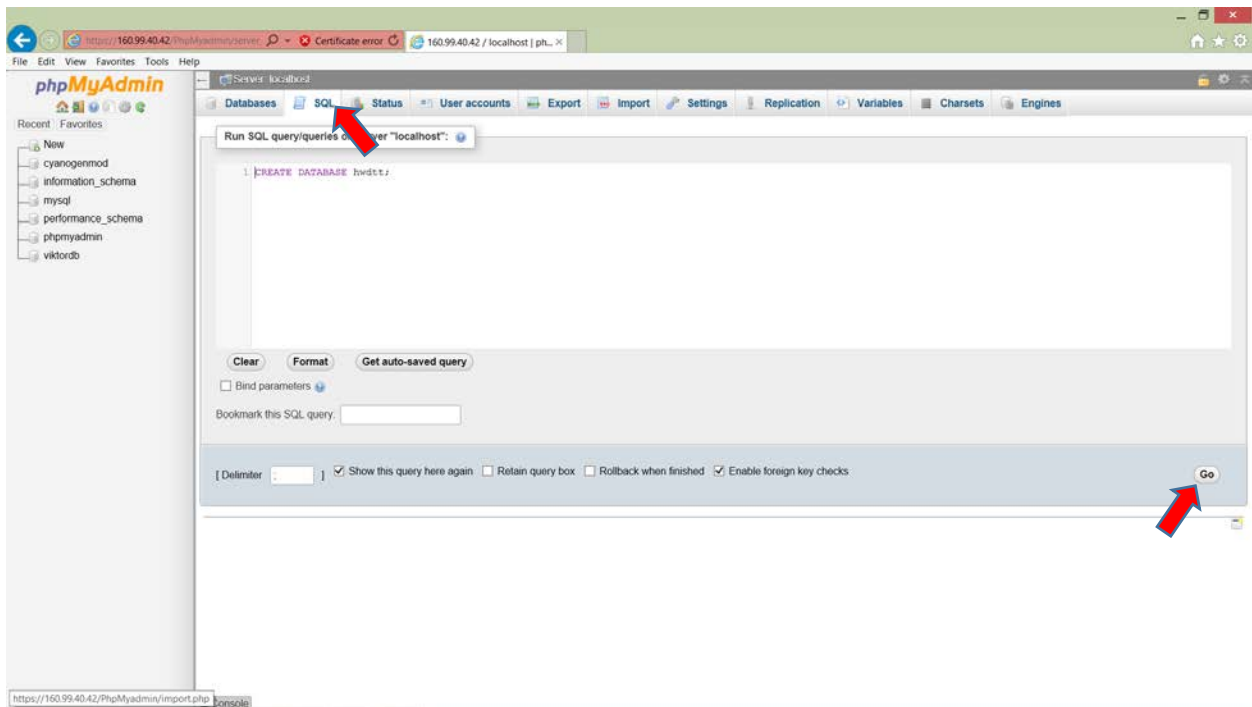
A. niz SQL naredbi:

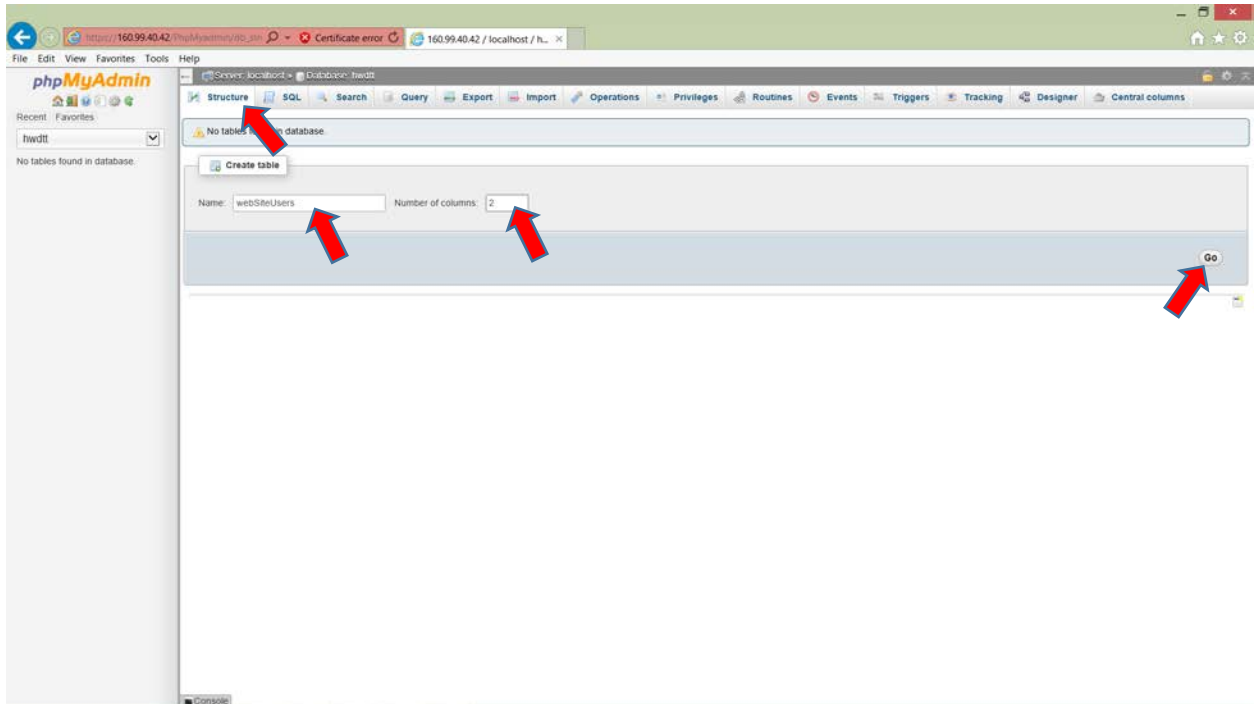
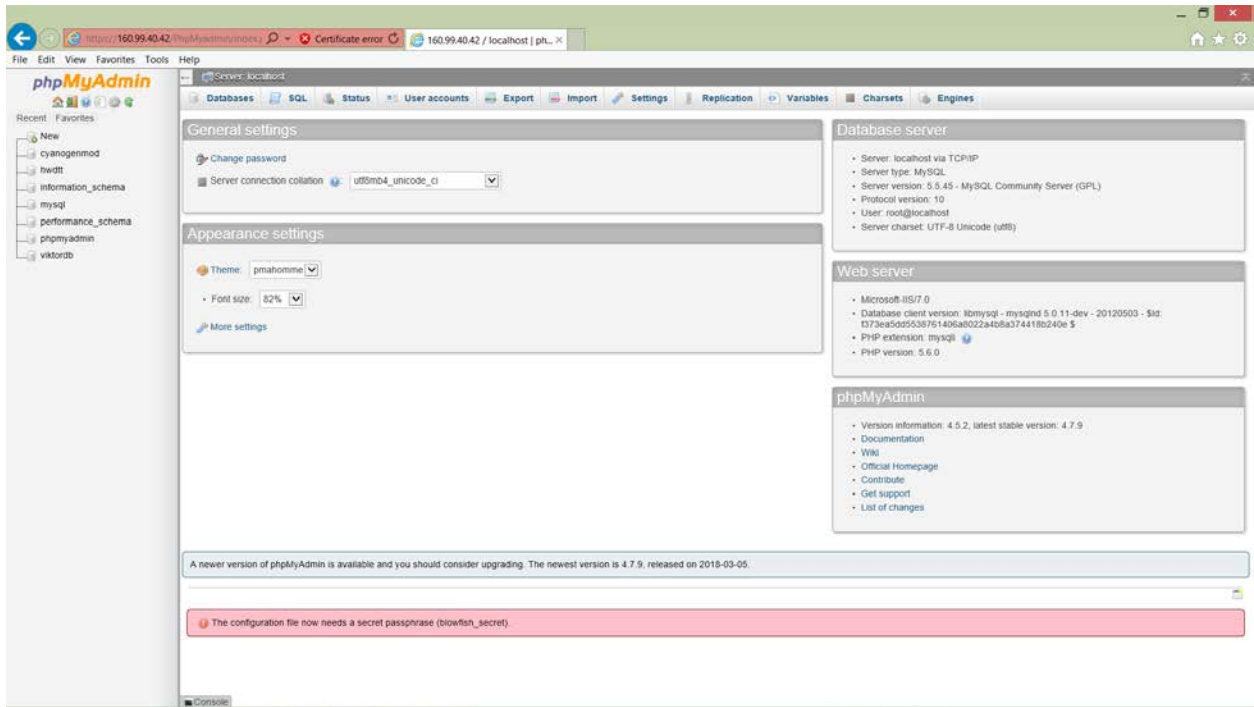
1. CREATE DATABASE hwdtt;
2. USE hwdtt
3. CREATE TABLE webSiteUsers (username VARCHAR(20) NOT NULL, password VARCHAR(20) NOT NULL);
4. Insert INTO webSiteUsers (username, password) VALUES ("Konrad", "abc2125");
5. Insert INTO webSiteUsers (username, password) VALUES ("Gracie", "157WXY3");
6. SELECT username, password FROM webSiteUsers;
7. SELECT COUNT(\*) FROM webSiteUsers WHERE username="Konrad" AND password="wrongPass";

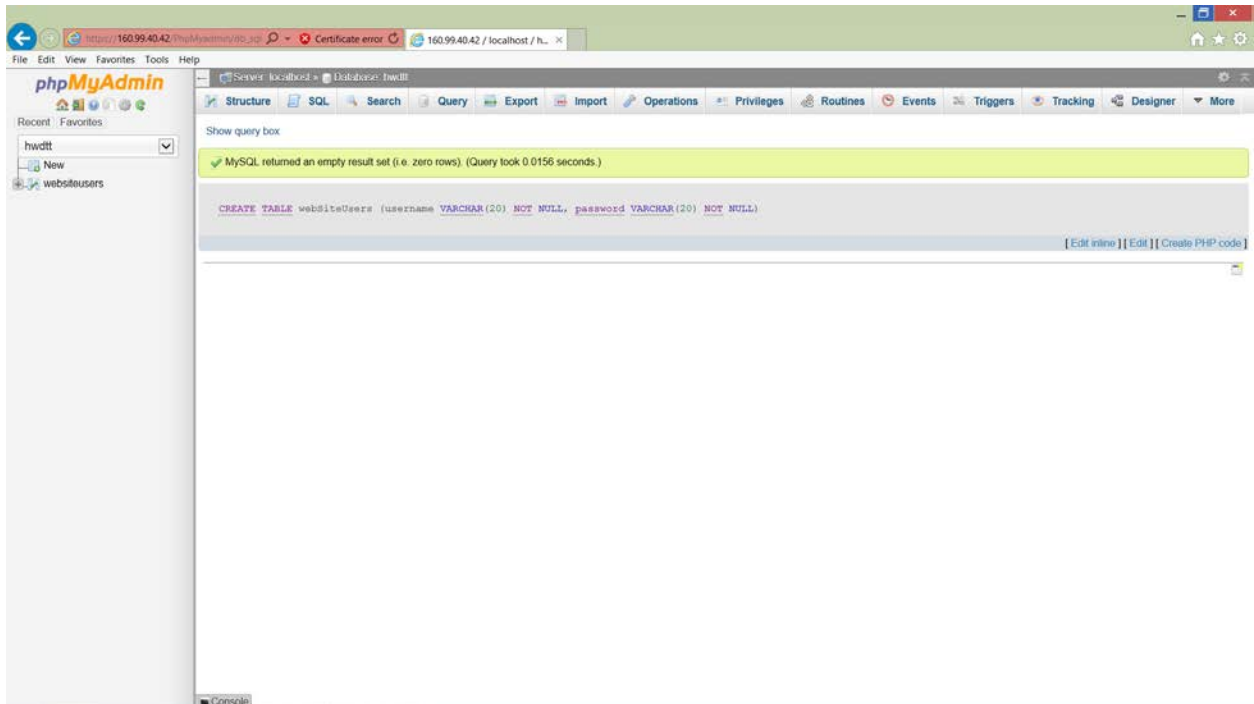
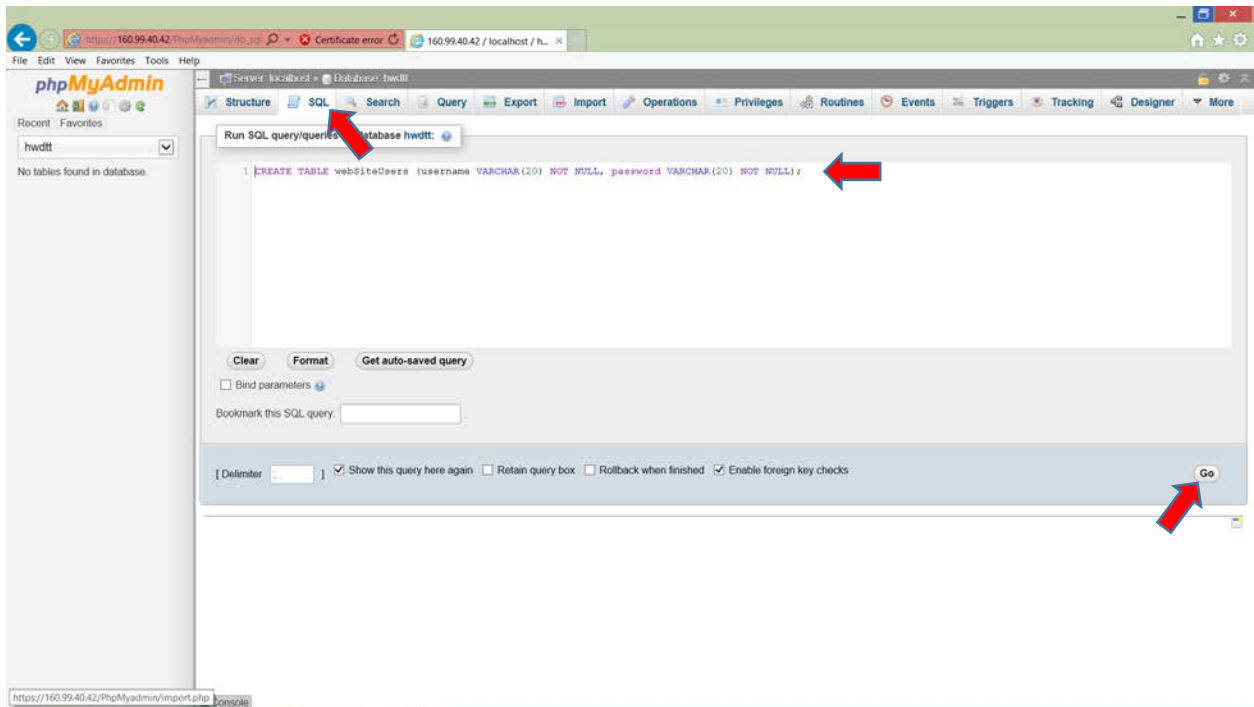




B. PHPMYAdmin korisničkim interfejsom. Iz horizontalnog toolbara bira se odgovarajuća radnja. U ovom slučaju treba izabrati Database, a potom popuniti polja za ime baze podataka i kodne šeme koja se koristi.







phpMyAdmin interface showing the 'Table structure' view for the 'webstusers' table. The table structure is displayed as follows:

#	Name	Type	Collation	Attributes	Null	Default	Extra	Action
1	username	varchar(20)	utf8_general_ci		No	None	Primary Unique Index Spatial Fulltext Distinct values	Change Drop Primary Unique Index Spatial Fulltext Distinct values Add to central columns
2	password	varchar(20)	utf8_general_ci		No	None	Primary Unique Index Spatial Fulltext Distinct values	Change Drop Primary Unique Index Spatial Fulltext Distinct values Add to central columns

Information section:

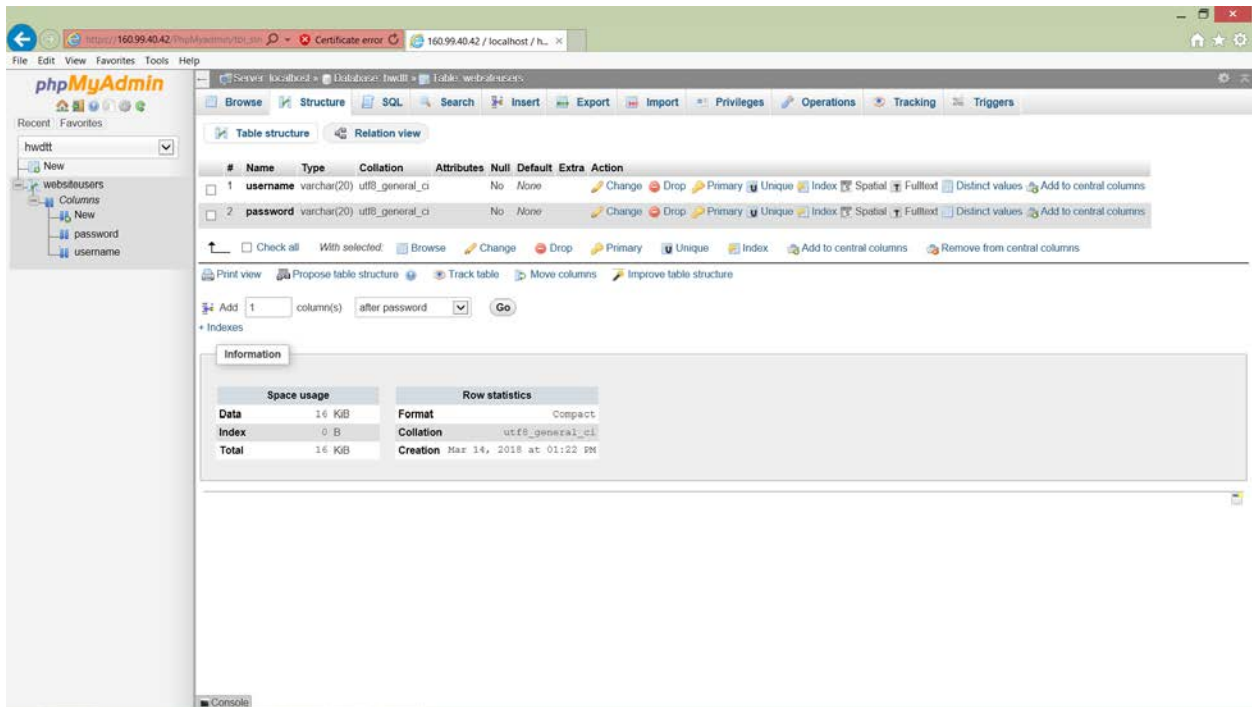
Space usage		Row statistics	
Data	14 KB	Format	Compact
Index	0 B	Collation	utf8_general_ci
Total	14 KB	Creation	Mar 14, 2018 at 01:22 PM

phpMyAdmin interface showing the 'Relation view' for the 'webstusers' table. The table structure is displayed as follows:

#	Name	Type	Collation	Attributes	Null	Default	Extra	Action
1	username	varchar(20)	utf8_general_ci		No	None	Primary Unique Index Spatial Fulltext Distinct values	Change Drop Primary Unique Index Spatial Fulltext Distinct values Add to central columns
2	password	varchar(20)	utf8_general_ci		No	None	Primary Unique Index Spatial Fulltext Distinct values	Change Drop Primary Unique Index Spatial Fulltext Distinct values Add to central columns

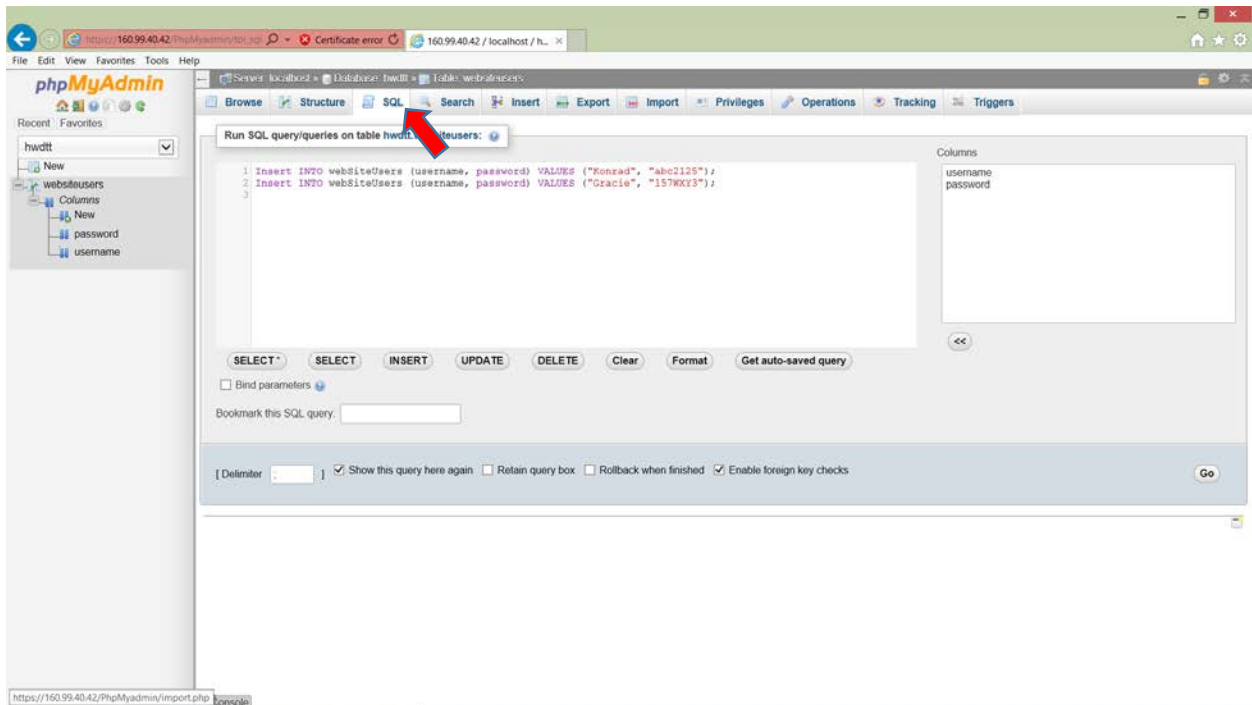
Information section:

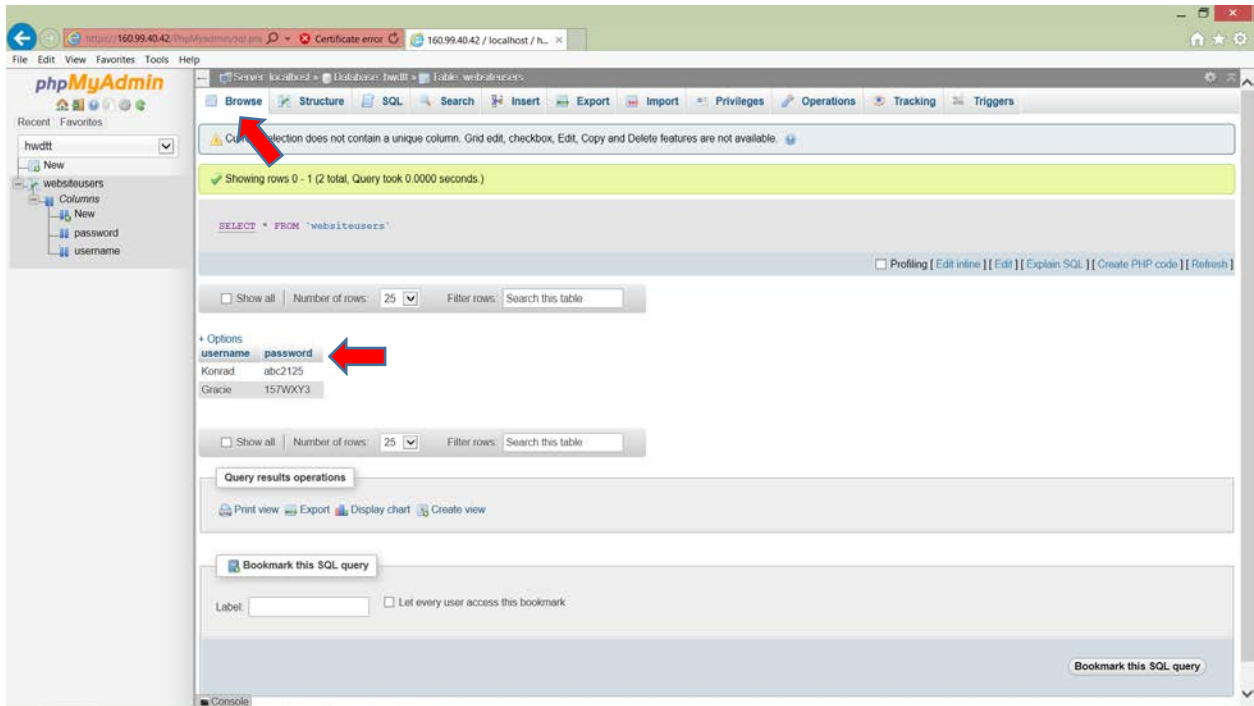
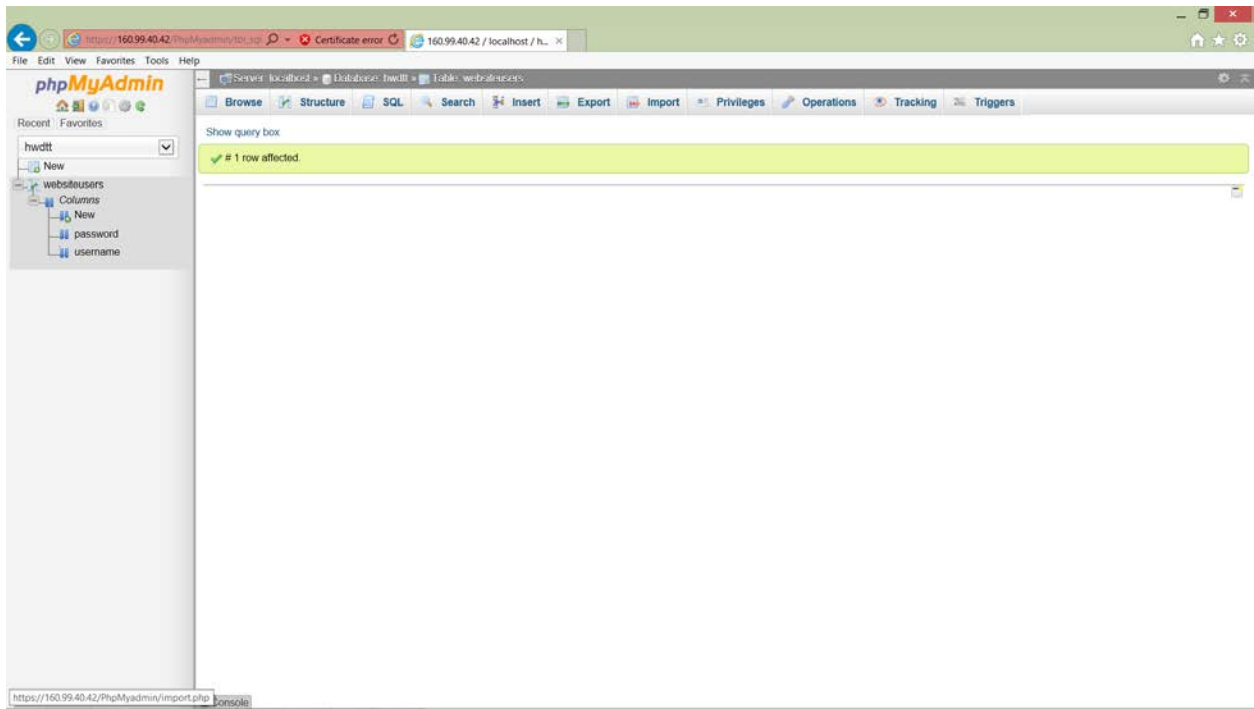
Space usage		Row statistics	
Data	14 KB	Format	Compact
Index	0 B	Collation	utf8_general_ci
Total	14 KB	Creation	Mar 14, 2018 at 01:22 PM



Popunjavanje kolona u tabeli, dozvoljeno je sekvencijalno izvršavanje više upita. SQL Naredba "INSERT"

.....





Column Type Function Null Value  
username varchar(20) student  
password varchar(20) student\_nw

Ignore

Column Type Function Null Value  
username varchar(20)  
password varchar(20)

Insert as new row and then Go back to previous page

Go Preview SQL Reset

Continue insertion with 2 rows

https://160.99.40.42/PhpMyadmin/tbl\_replace.php

1 row inserted.

```
INSERT INTO `websiteusers` (`username`, `password`) VALUES ('student', 'student_nw');
```

Run SQL query/queries on table hwdtt.websiteusers:

```
INSERT INTO `websiteusers` (`username`, `password`) VALUES ('student', 'student_nw');
```

Columns: username, password

SELECT SELECT INSERT UPDATE DELETE Clear Format Get auto-saved query

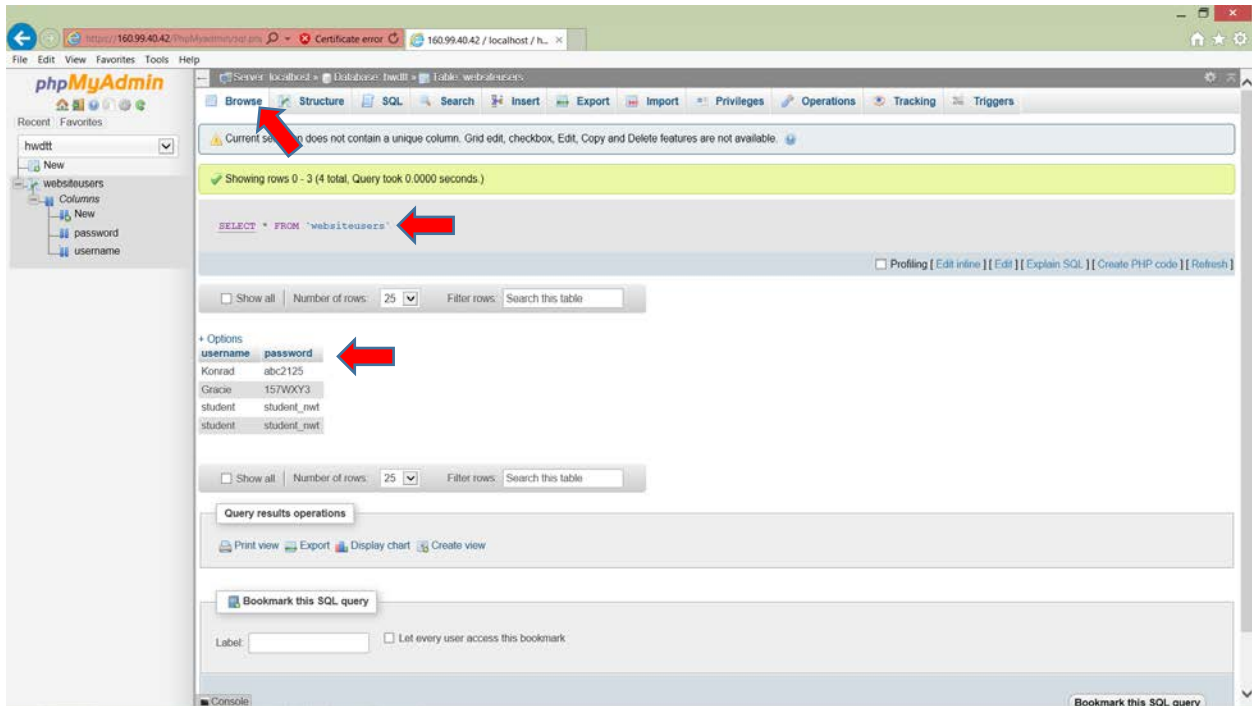
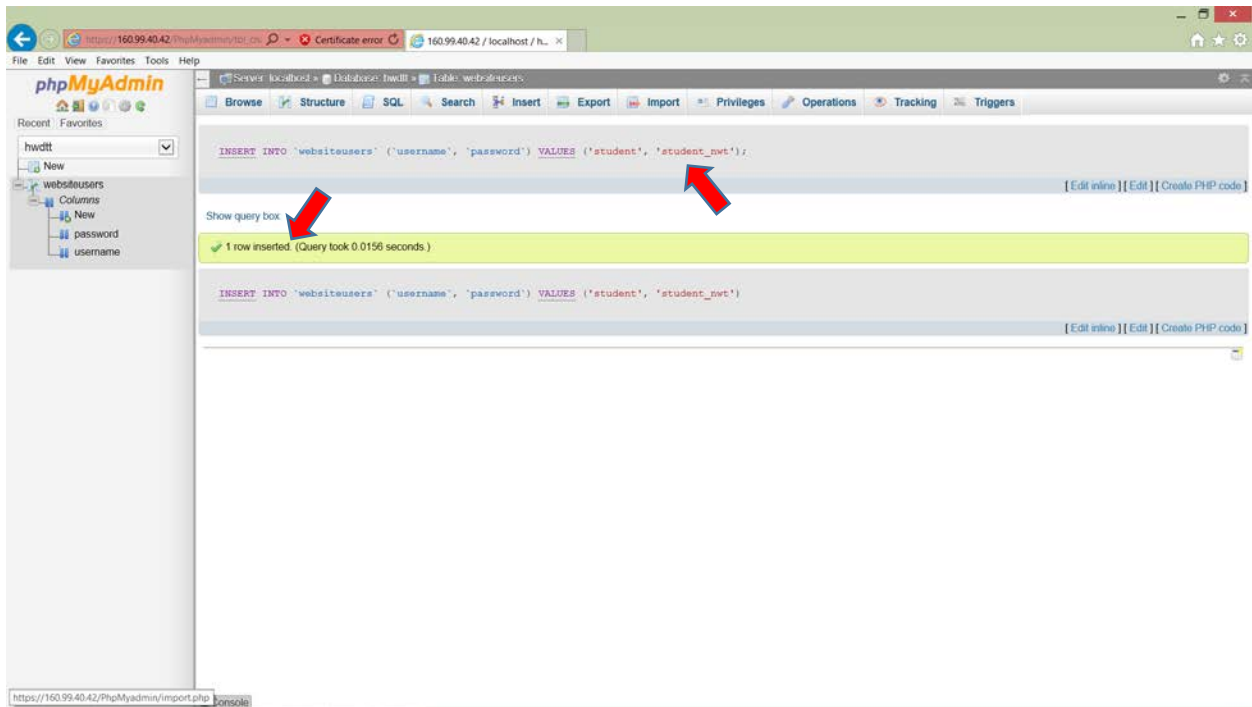
Bind parameters

Bookmark this SQL query:

Delimiter: ; Show this query here again Retain query box Rollback when finished Enable foreign key checks

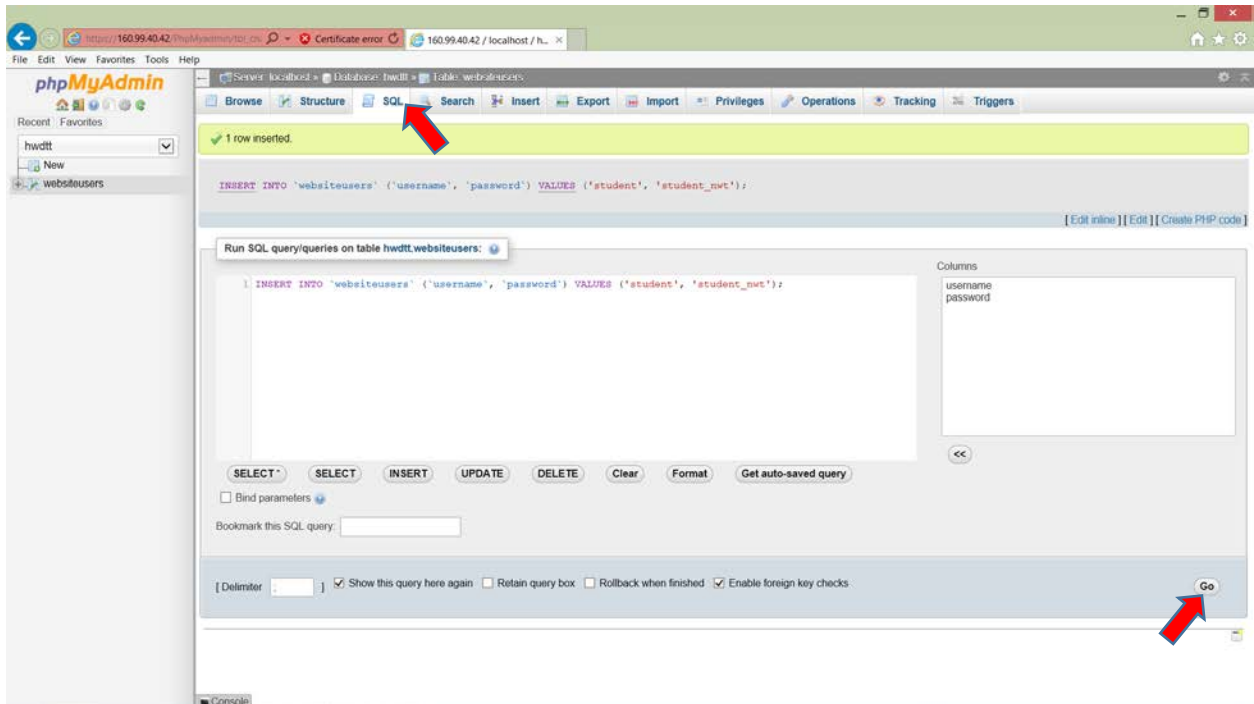
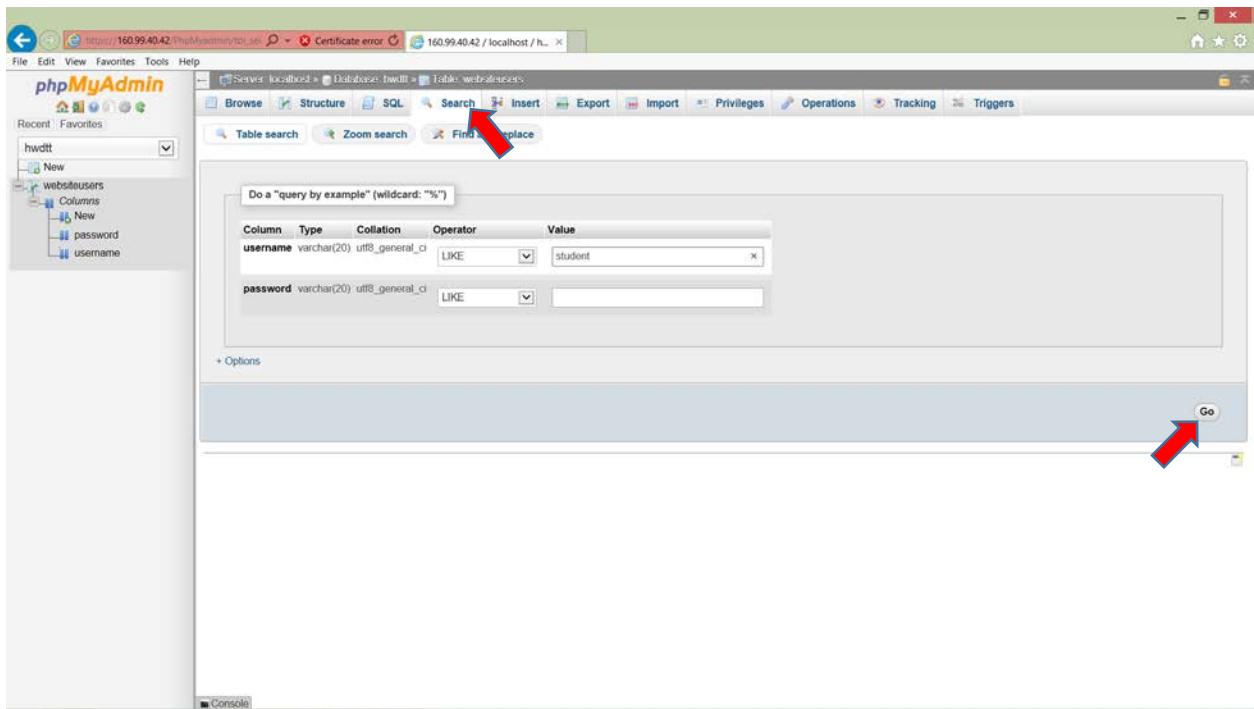
Go

https://160.99.40.42/PhpMyadmin/tbl\_import.php?db=hwdtt&table=websiteusers&token=10035cba3262a898da02ad1b8662711



Postavljanje upita.





Browser window showing phpMyAdmin interface. The URL is <https://160.99.40.42/PhpMyAdmin/sql.php>. The interface displays the table structure for 'websitesusers' in the 'hwtdtt' database. A red arrow points to the 'Browse' tab, and another red arrow points to the 'password' column in the table options.

Database: hwtdtt | Table: websitesusers

Current session does not contain a unique column. Grid edit, checkbox, Edit, Copy and Delete features are not available.

Showing rows 0 - 2 (3 total, Query took 0.0000 seconds)

```
SELECT * FROM `websitesusers`
```

Options

username	password
Konrad	abc2125
Grace	157WXY3
student	student_nwt

Query results operations: Print view, Export, Display chart, Create view

Bookmark this SQL query

Label:   Let every user access this bookmark

Bookmark this SQL query

URL: [https://160.99.40.42/PhpMyAdmin/tbl\\_sql.php?db=hwtdtt&table=websitesusers&token=c0ac1b9f793e4ad92cde5de87d658771](https://160.99.40.42/PhpMyAdmin/tbl_sql.php?db=hwtdtt&table=websitesusers&token=c0ac1b9f793e4ad92cde5de87d658771)